

2001
Carroll County, Iowa
Iowa North Zone (1401)
NAD_83(1996)

Point Number: 4

Northing: 3464974.86(Ft) Easting: 4488564.52(Ft)

Northing: 1056126.450(M) Easting: 1368117.203(M)

Elev: 1469.40(Ft) NAVD_88

Elev: 447.875(M) NAVD_88 Ellip Ht: 418.797(M) 96C Geoid Ht: -29.078(M)

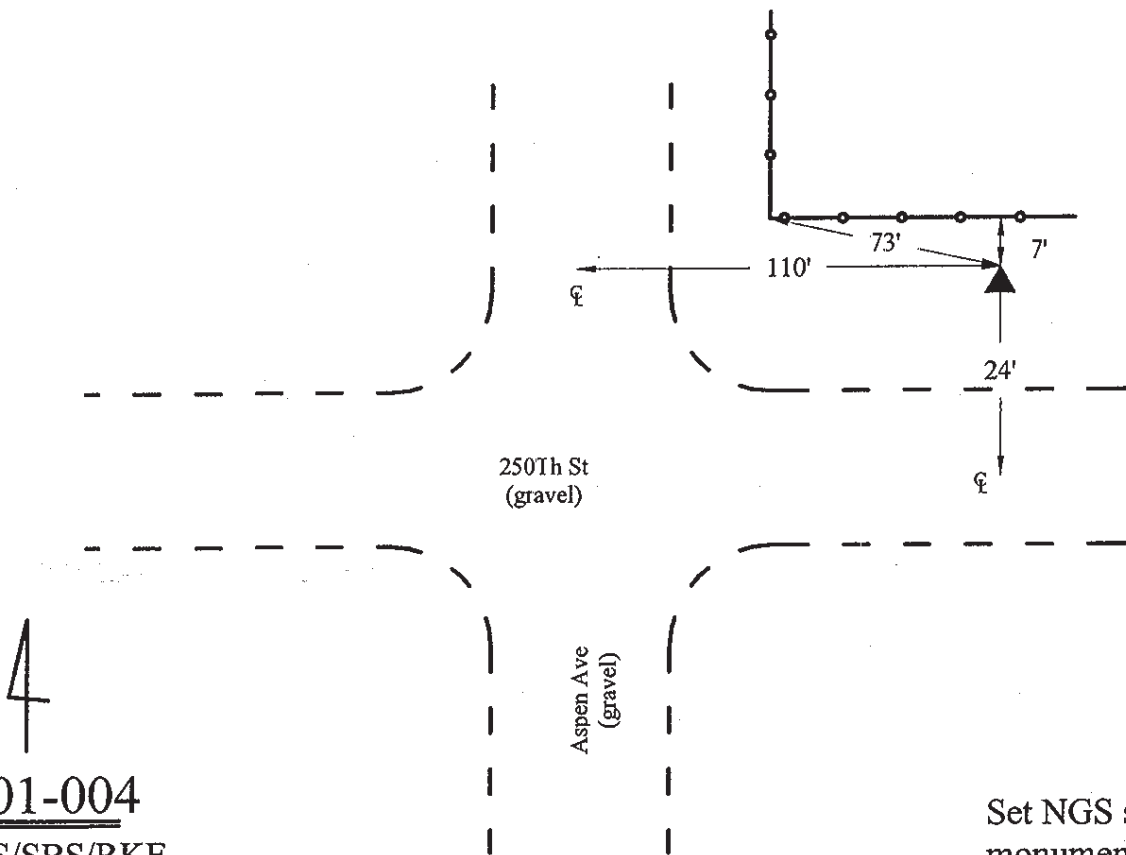
Latitude: 41-59-38.817122 N Longitude: 95-05-30.252201 W

Theta: -1-04-43.65 Combination Factor: 0.99994824

Designation: CARROLL CO GPS CONTROL PT 2001-004

Monument Type: 5/8" dia driven aluminum rod with a 2-1/2" dia aluminum cap and permanent magnet encased in a 5" dia PVC pipe with an aluminum access cover.

Remarks: Located near the SW Cor of Sec 18 T83N R36W.



4
2001-004
BRS/SBS/RKE
March 27, 2001

Set NGS style rod
monument with
access cover