

2001
Carroll County, Iowa
Iowa North Zone (1401)
NAD_83(1996)

Point Number: 7

Northing: 3512342.09(Ft) Easting: 4489515.16(Ft)

Northing: 1070564.009(M) Easting: 1368406.959(M)

Elev: 1362.72(Ft) NAVD_88

Elev: 415.357(M) NAVD_88 Ellip Ht: 386.299(M) 96C Geoid Ht: -29.058(M)

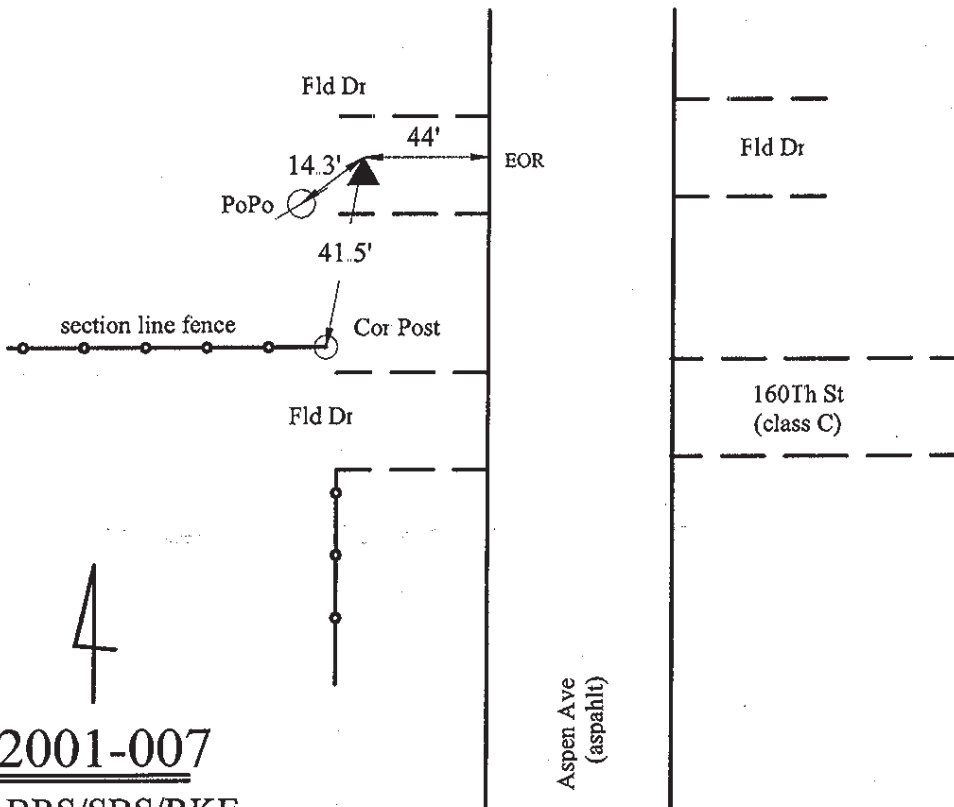
Latitude: 42-07-26.841623 N Longitude: 95-05-29.473616 W

Theta: -1-04-43.12 Combination Factor: 0.99992945

Designation: CARROLL CO GPS CONTROL PT 2001-007

Monument Type: 5/8" dia driven aluminum rod with a 2-1/2" dia aluminum cap and permanent magnet encased in a 5" dia PVC pipe with an aluminum access cover.

Remarks: Located near the SE Cor of Sec 36 T85N R37W.



2001-007
BRS/SBS/RKE
March 27, 2001

Set NGS style rod
monument with
access cover