

2001  
Carroll County, Iowa  
Iowa North Zone (1401)  
NAD\_83(1996)

Point Number: 13

Northing: 3464583.83(Ft)      Easting: 4504214.30(Ft)

Northing: 1056007.264(M)      Easting: 1372887.264(M)

Elev: 1414.44(Ft) NAVD\_88

Elev: 431.121(M) NAVD\_88      Ellip Ht: 402.144(M)      96C Geoid Ht: -28.977(M)

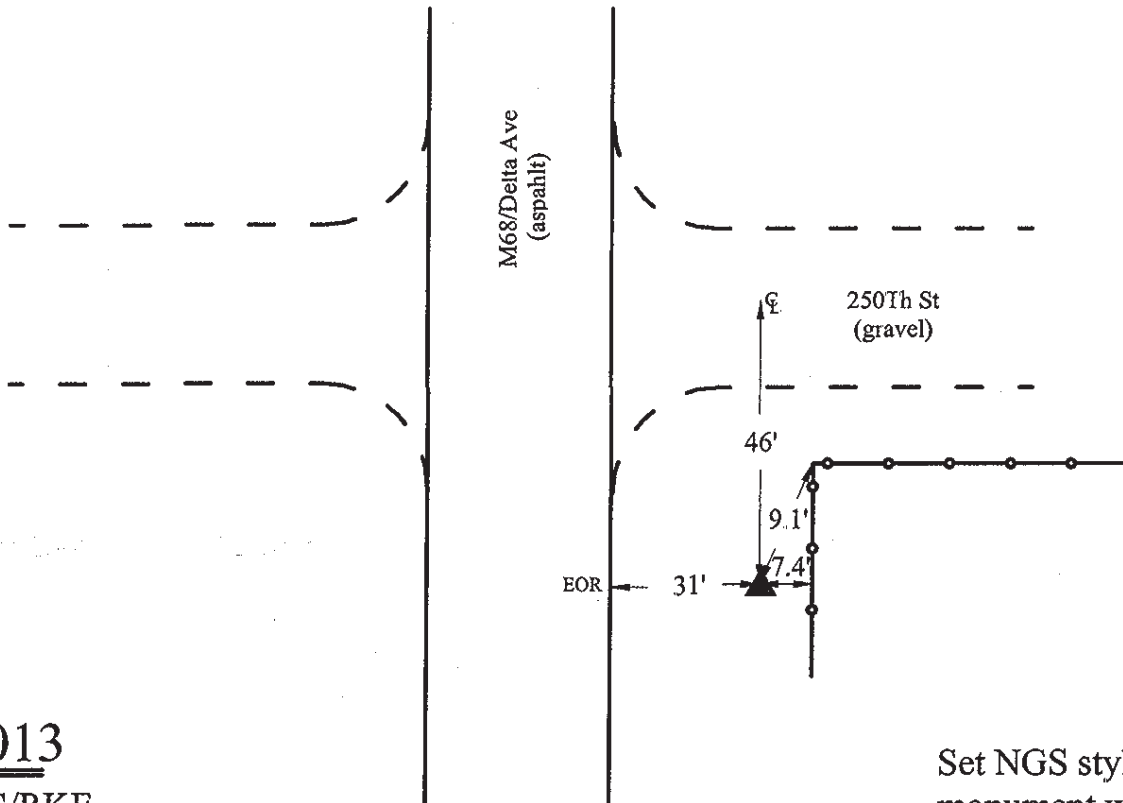
Latitude: 41-59-37.812950 N      Longitude: 95-02-02.947436 W

Theta: -1-02-23.15      Combination Factor: 0.99995091

Designation: CARROLL CO GPS CONTROL PT 2001-013

**Monument Type:** 5/8" dia driven aluminum rod with a 2-1/2" dia aluminum cap and permanent magnet encased in a 5" dia PVC pipe with an aluminum access cover.

**Remarks:** Located near the NW Cor of Sec 22 T83N R36W.



2001-013

BRS/SBS/RKE  
March 27, 2001

Set NGS style rod  
monument with  
access cover