

2001
Carroll County, Iowa
Iowa North Zone (1401)
NAD_83(1996)

Point Number: 14

Northing: 3479786.16(Ft) Easting: 4504561.31(Ft)

Northing: 1060640.942(M) Easting: 1372993.034(M)

Elev: 1457.36(Ft) NAVD_88

Elev: 444.204(M) NAVD_88 Ellip Ht: 415.188(M) 96C Geoid Ht: -29.016(M)

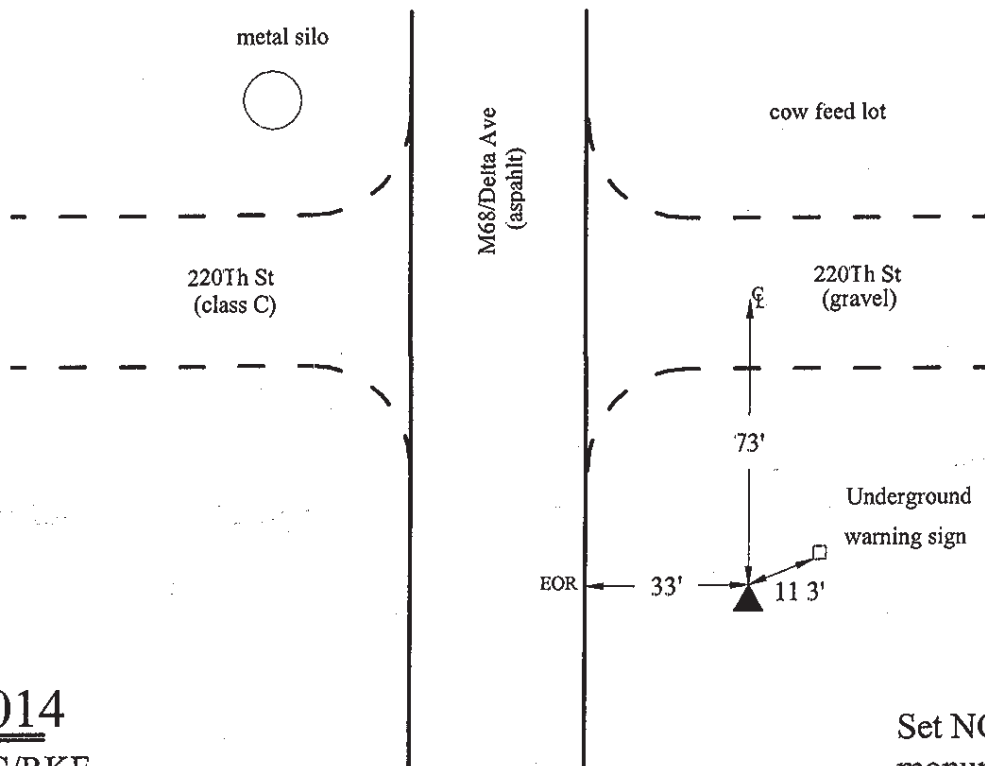
Latitude: 42-02-08.030854 N Longitude: 95-02-02.005407 W

Theta: -1-02-22.51 Combination Factor: 0.99994064

Designation: CARROLL CO GPS CONTROL PT 2001-014

Monument Type: 5/8" dia driven aluminum rod with a 2-1/2" dia aluminum cap and permanent magnet encased in a 5" dia PVC pipe with an aluminum access cover.

Remarks: Located near the NW Cor of Sec 3 T83N R36W



4
2001-014
BRS/SBS/RKE
March 27, 2001

Set NGS style rod
monument with
access cover