

2001
Carroll County, Iowa
Iowa North Zone (1401)
NAD_83(1996)

Point Number: 22

Northing: 3464329.66(Ft) Easting: 4519995.58(Ft)

Northing: 1055929.792(M) Easting: 1377697.408(M)

Elev: 1398.21(Ft) NAVD_88

Elev: 426.174(M) NAVD_88 Ellip Ht: 397.335(M) 96C Geoid Ht: -28.839(M)

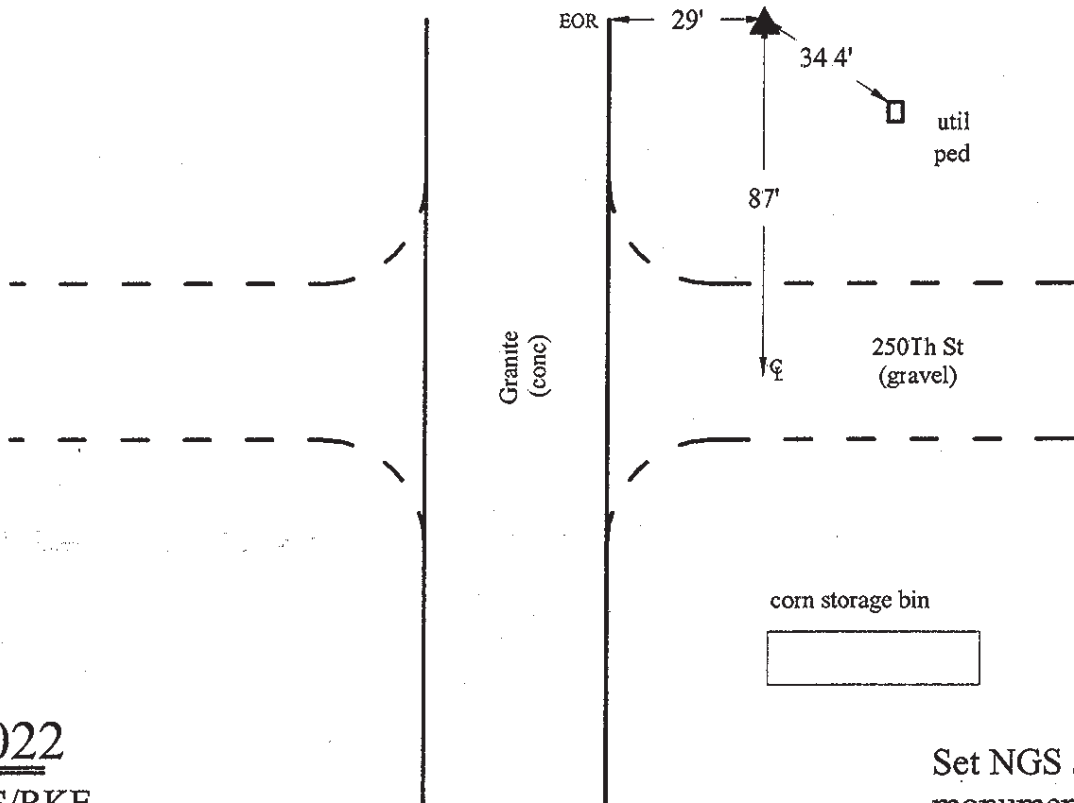
Latitude: 41-59-38.077903 N Longitude: 94-58-33.935050 W

Theta: -1-00-01.49 Combination Factor: 0.99995165

Designation: **CARROLL CO GPS CONTROL PT 2001-022**

Monument Type: 5/8" dia driven aluminum rod with a 2-1/2" dia aluminum cap and permanent magnet encased in a 5" dia PVC pipe with an aluminum access cover.

Remarks: Located near the SW Cor of Sec 18 T83N R35W.



4

2001-022

BRS/SBS/RKE

March 27, 2001

Set NGS style rod
monument with
access cover