

2001
Carroll County, Iowa
Iowa North Zone (1401)
NAD_83(1996)

Point Number: 30

Northing: 3448214.06(Ft) Easting: 4535438.78(Ft)

Northing: 1051017.748(M) Easting: 1382404.504(M)

Elev: 1358.60(Ft) NAVD_88

Elev: 414.102(M) NAVD_88 Ellip Ht: 385.595(M) 96C Geoid Ht: -28.507(M)

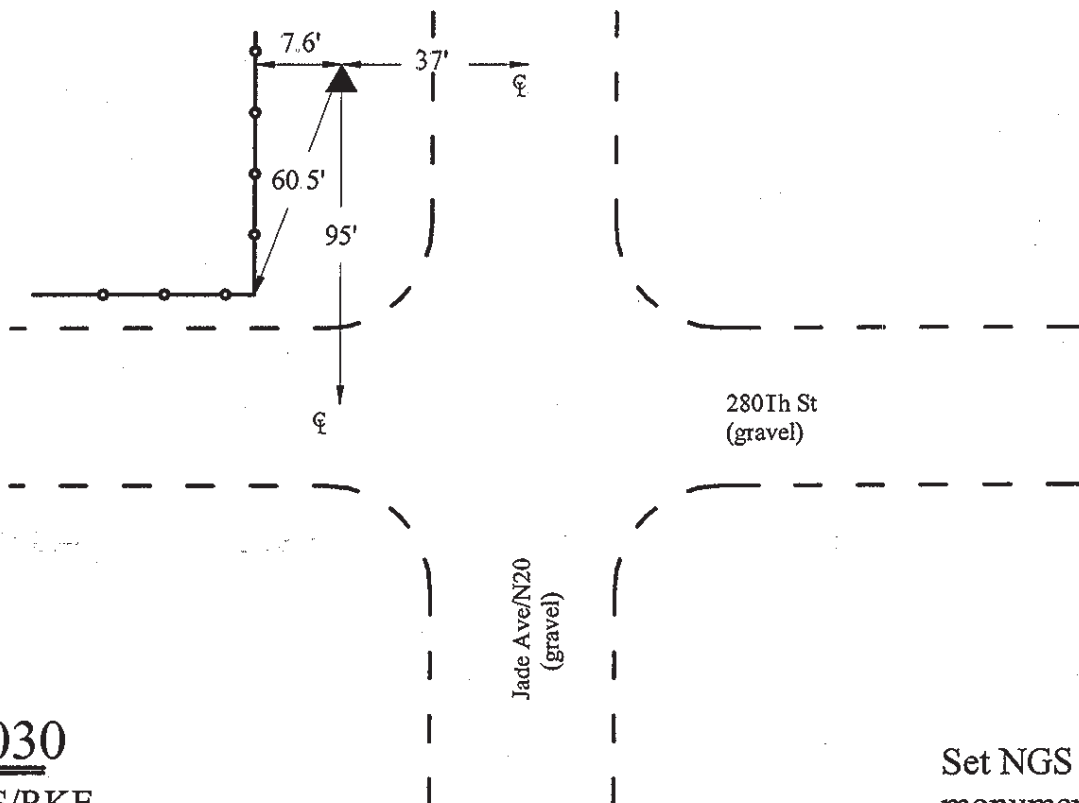
Latitude: 41-57-01.510465 N Longitude: 94-55-05.874982 W

Theta: -0-57-40.48 Combination Factor: 0.99996262

Designation: **CARROLL CO GPS CONTROL PT 2001-030**

Monument Type: 5/8" dia driven aluminum rod with a 2-1/2" dia aluminum cap and permanent magnet encased in a 5" dia PVC pipe with an aluminum access cover.

Remarks: Located near the SE Cor of Sec 33 T83N R35W.



2001-030

BRS/SBS/RKE
March 28, 2001

Set NGS style rod
monument with
access cover