

2001
 Carroll County, Iowa
 Iowa North Zone (1401)
 NAD_83(1996)

Point Number: 31

Northing: 3463583.74(Ft) Easting: 4535790.14(Ft)

Northing: 1055702.437(M) Easting: 1382511.599(M)

Elev: 1327.41(Ft) NAVD_88

Elev: 404.595(M) NAVD_88 Ellip Ht: 375.953(M) 96C Geoid Ht: -28.642(M)

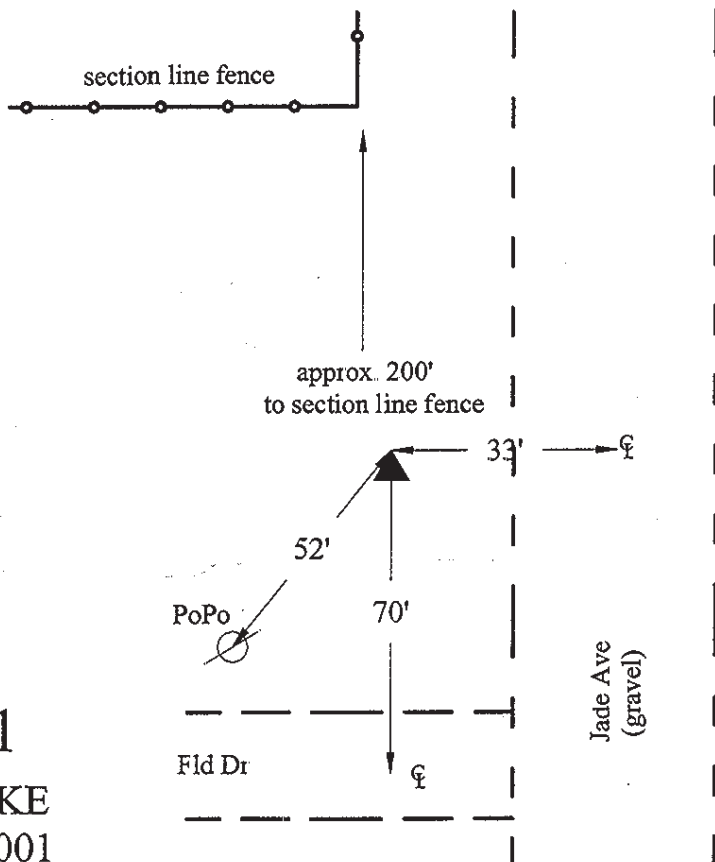
Latitude: 41-59-33.380866 N Longitude: 94-55-04.637263 W

Theta: -0-57-39.64 Combination Factor: 0.99995527

Designation: CARROLL CO GPS CONTROL PT 2001-031

Monument Type: 5/8" dia driven aluminum rod with a 2-1/2" dia aluminum cap and permanent magnet encased in a 5" dia PVC pipe with an aluminum access cover.

Remarks: Located near the NE Cor of Sec 21 T83N R35W.



4
2001-031
 BRS/SBS/RKE
 March 28, 2001

Set NGS style rod
 monument with
 access cover