

2001
Carroll County, Iowa
Iowa North Zone (1401)
NAD_83(1996)

Point Number: 35

Northing: 3527133.33(Ft) Easting: 4537182.49(Ft)

Northing: 1075072.388(M) Easting: 1382935.990(M)

Elev: 1282.87(Ft) NAVD_88

Elev: 391.020(M) NAVD_88 Ellip Ht: 362.055(M) 96C Geoid Ht: -28.965(M)

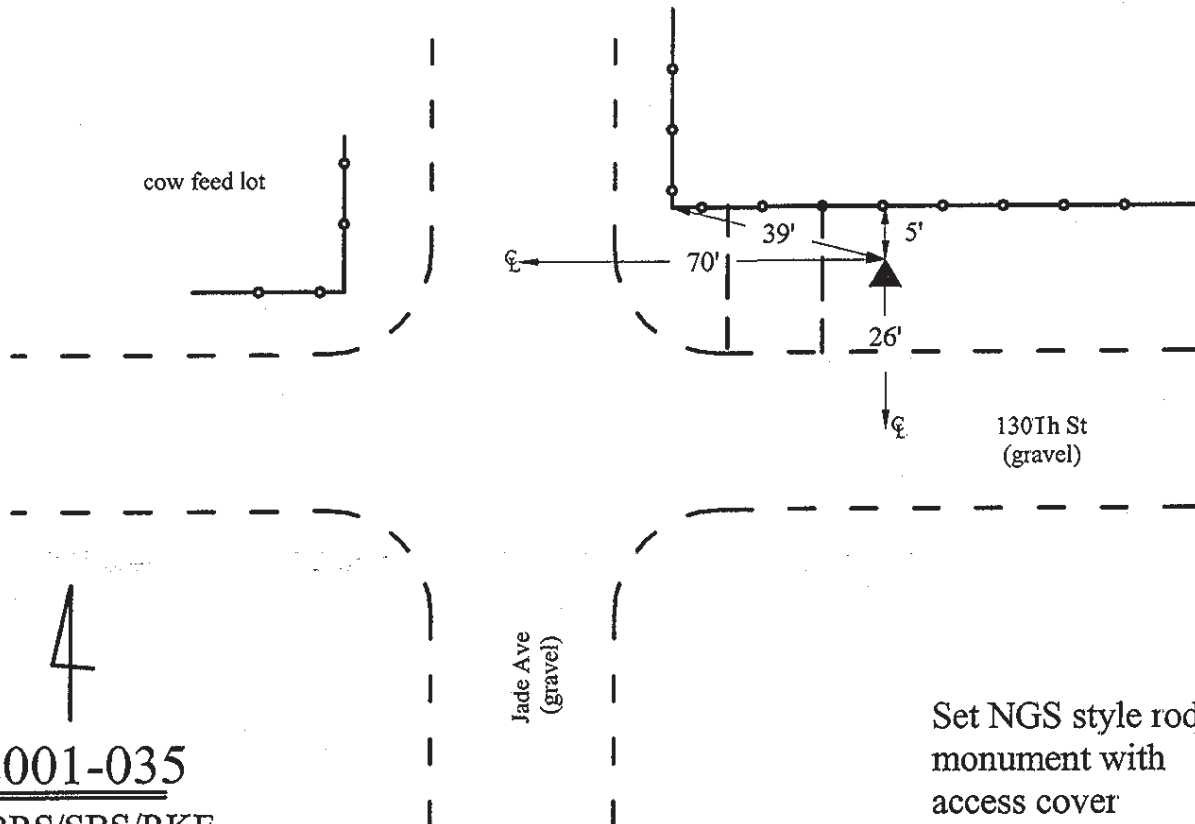
Latitude: 42-10-01.315884 N Longitude: 94-55-00.304208 W

Theta: -0-57-36.70 Combination Factor: 0.99992648

Designation: CARROLL CO GPS CONTROL PT 2001-035

Monument Type: 5/8" dia driven aluminum rod with a 2-1/2" dia aluminum cap and permanent magnet encased in a 5" dia PVC pipe with an aluminum access cover.

Remarks: Located near the SW Cor of Sec 15 T85N R35W.



2001-035
BRS/SBS/RKE
March 28, 2001

Set NGS style rod
monument with
access cover