

2001  
Carroll County, Iowa  
Iowa North Zone (1401)  
NAD\_83(1996)

Point Number: 36

Northing: 3542761.48(Ft)      Easting: 4537514.33(Ft)

Northing: 1079835.859(M)      Easting: 1383037.134(M)

Elev: 1286.88(Ft) NAVD\_88

Elev: 392.243(M) NAVD\_88      Ellip Ht: 363.257(M)      96C Geoid Ht: -28.986(M)

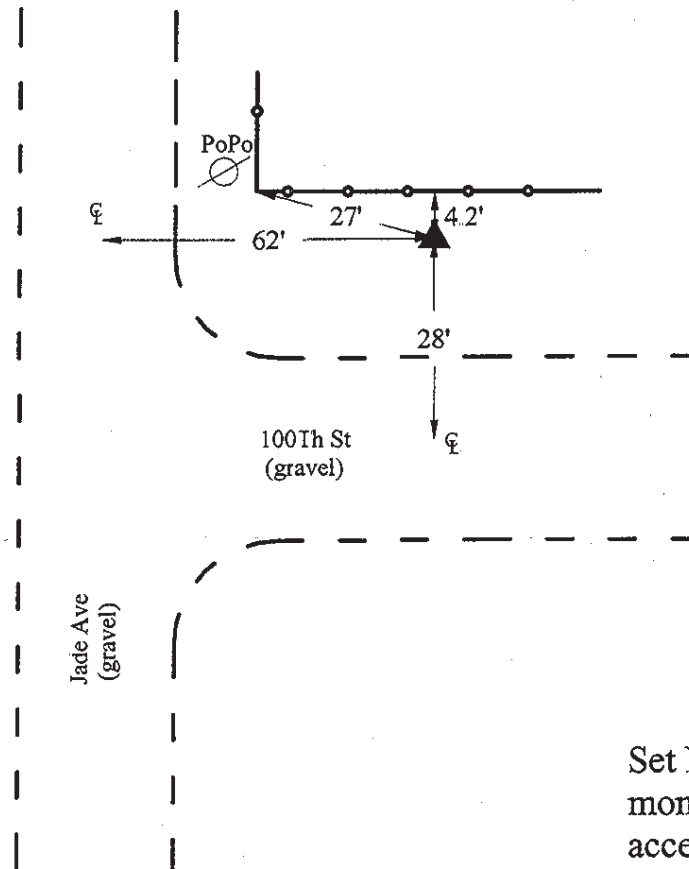
Latitude: 42-12-35.736117 N      Longitude: 94-54-59.375405 W

Theta: -0-57-36.07      Combination Factor: 0.99992008

Designation: **CARROLL CO GPS CONTROL PT 2001-036**

**Monument Type:** 5/8" dia driven aluminum rod with a 2-1/2" dia aluminum cap and permanent magnet encased in a 5" dia PVC pipe with an aluminum access cover.

**Remarks:** Located near the SW Cor of Sec 34, T86N R35W.



4  
2001-036  
BRS/RKE/SBS  
March 28, 2001

Set NGS style rod  
monument with  
access cover