

2001  
Carroll County, Iowa  
Iowa North Zone (1401)  
NAD\_83(1996)

Point Number: 37

Northing: 3416041.75(Ft)      Easting: 4550882.09(Ft)

Northing: 1041211.607(M)      Easting: 1387111.637(M)

Elev: 1400.50(Ft) NAVD\_88

Elev: 426.872(M) NAVD\_88      Ellip Ht: 398.904(M)      96C Geoid Ht: -27.969(M)

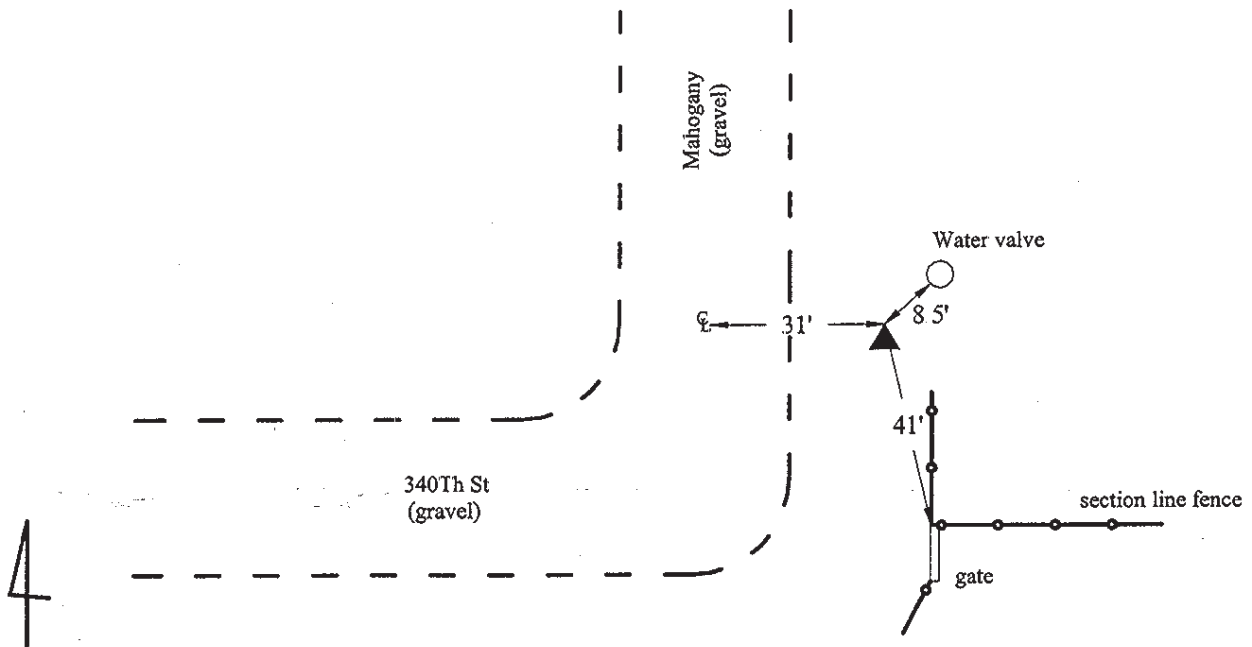
Latitude: 41-51-46.237919 N      Longitude: 94-51-34.685087 W

Theta: -0-55-17.35      Combination Factor: 0.99998064

Designation: **CARROLL CO GPS CONTROL PT 2001-037**

**Monument Type:** 5/8" dia driven aluminum rod with a 2-1/2" dia aluminum cap and permanent magnet encased in a 5" dia PVC pipe with an aluminum access cover.

**Remarks:** Located near the SW Cor of Sec 31 T82N R34W.



**2001-037**  
BRS/RKE/SBS  
March 28, 2001

Set NGS style rod  
monument with  
access cover