

2001  
Carroll County, Iowa  
Iowa North Zone (1401)  
NAD\_83(1996)

Point Number: 72

Northing: 3541710.64(Ft)      Easting: 4599728.96(Ft)

Northing: 1079515.561(M)      Easting: 1402000.190(M)

Elev: 1166.65(Ft) NAVD\_88

Elev: 355.595(M) NAVD\_88      Ellip Ht: 327.076(M)      96C Geoid Ht: -28.519(M)

Latitude: 42-12-34.819059 N      Longitude: 94-41-12.542597 W

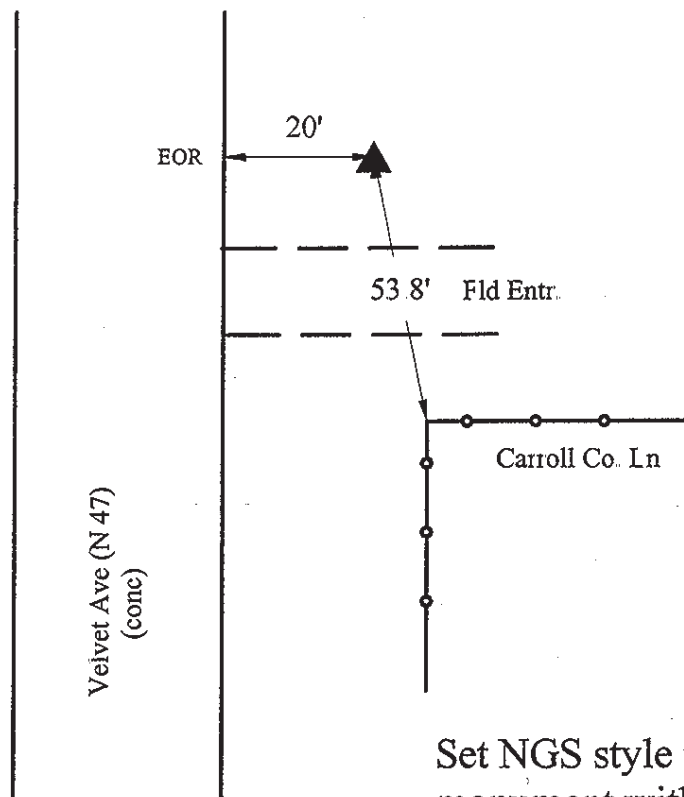
Theta: -0-48-15.69      Combination Factor: 0.99992579

Designation: CARROLL CO GPS CONTROL PT 2001-072

**Monument Type:** 5/8" dia driven aluminum rod with a 2-1/2" dia aluminum cap and permanent magnet encased in a 5" dia PVC pipe with an aluminum access cover.

**Remarks:** Located near the SW Cor of Sec 34 T86N R33W.

4  
2001-072  
BRS/SBS/RKE  
March 29, 2001



Set NGS style rod  
monument with  
access cover