

Cedar County, Iowa

Horizontal Datum: **NAD 83(2011)** - Vertical Datum: **NAVD 1988**
Iowa State Plane South Zone (1402)
Iowa Regional Coordinate System, Zone 10. Cedar Rapids (LCC)
US Survey Feet
2015

Point Name: **1**

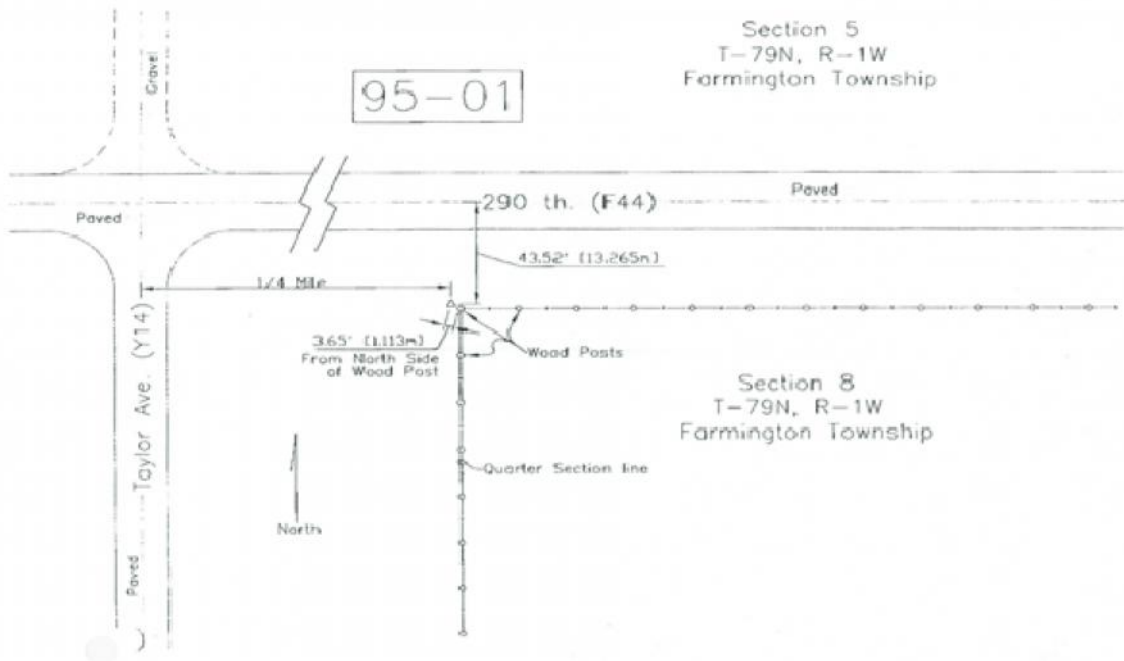
Designation: 95-01 Cedar Co GPS Control Pt

NAD 83(NA2011) Latitude: **N41°40'11.22747"** Longitude: **W90°59'29.08609"**
NAVD 88 Ortho Height: **765.40sft** Ellip. Ht: **658.08sft** **Geoid12A**

Iowa South Zone (1402) Northing: **618252.65sft** Easting: **2325706.20sft**
Mapping Angle: **1°39'09"** Combination Scale Factor: **0.999950411**

IaRCS Zone 10 Northing: **7941127.450sft** Easting: **20684495.618sft**
Mapping Angle: **00° 27' 01"** Combination Scale Factor: **0.999992536**

Monument Type: Berntsen driven aluminum rod with a stamped survey cap, encased in a white PVC pipe with a NGS style alum. access cover.



This document was prepared by Dan Corbin, Inc. on September 30, 2015 for Cedar County, Iowa.