

Cedar County, Iowa
Horizontal Datum: **NAD 83(2011)** - Vertical Datum: **NAVD 1988**
Iowa State Plane South Zone (1402)
Iowa Regional Coordinate System, Zone 10. Cedar Rapids (LCC)
US Survey Feet
2015

Point Name: **4**

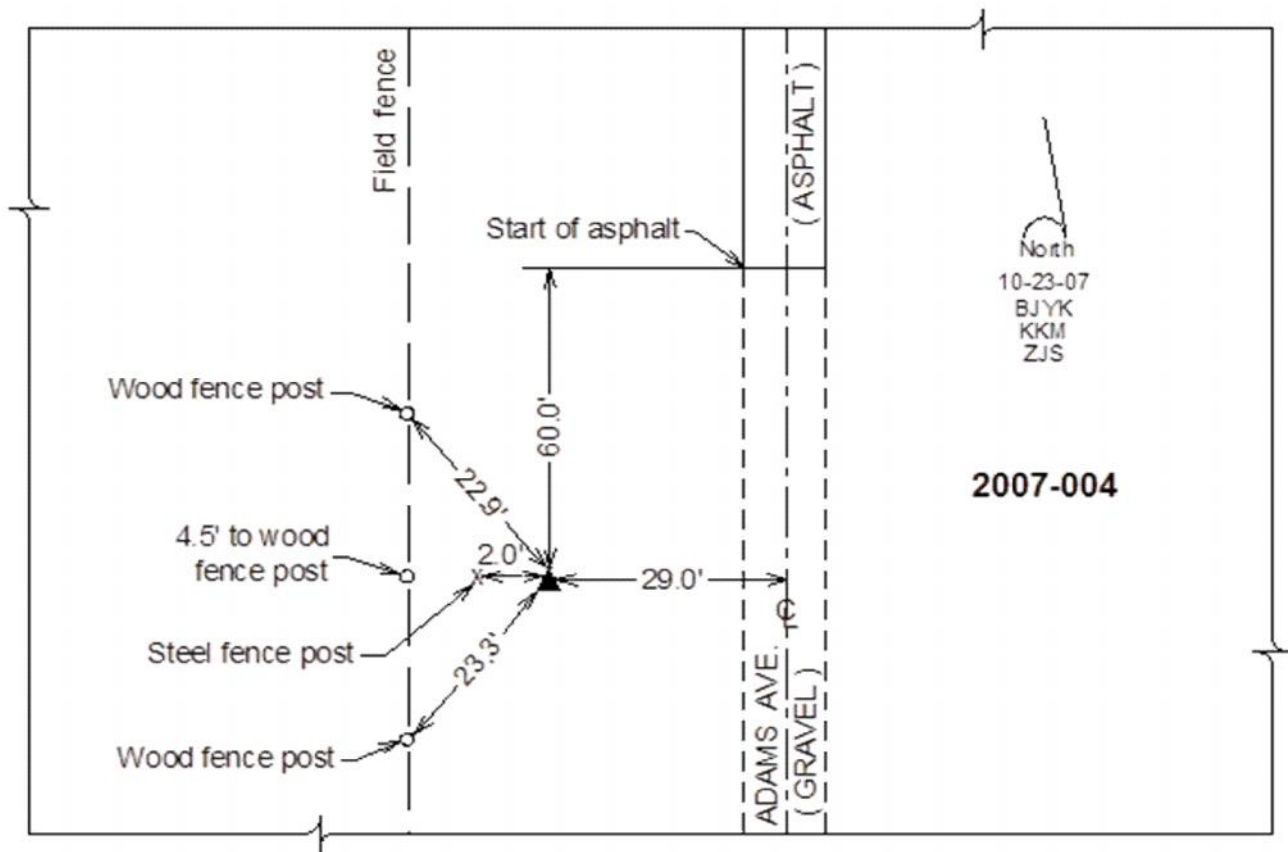
Designation: 2007-004 Cedar Co GPS Control Pt

NAD 83(NA2011) Latitude: **N41°54'07.24238"** Longitude: **W91°21'41.52567"**
NAVD 88 Ortho Height: **846.20sft** Ellip. Ht: **739.42sft** **Geoid12A**

Iowa South Zone (1402) Northing: **700149.38sft** Easting: **2222539.07sft**
Mapping Angle: **1°24'31"** Combination Scale Factor: **0.999987949**

IaRCS Zone 10 Northing: **8025174.769sft** Easting: **20583069.444sft**
Mapping Angle: **00° 12' 13"** Combination Scale Factor: **0.999985302**

Monument Type: Berntsen 3/4" Top Security Rod Monument with a 2-1/2" dia. domed survey cap and permanent magnet encased in a white PVC pipe with a NGS style alum. access cover.



This document was prepared by Dan Corbin, Inc. on September 30, 2015 for Cedar County, Iowa.