

Cedar County, Iowa
 Horizontal Datum: **NAD 83(2011)** - Vertical Datum: **NAVD 1988**
 Iowa State Plane South Zone (1402)
 Iowa Regional Coordinate System, Zone 10. Cedar Rapids (LCC)
 US Survey Feet
2015

Point Name: **7**

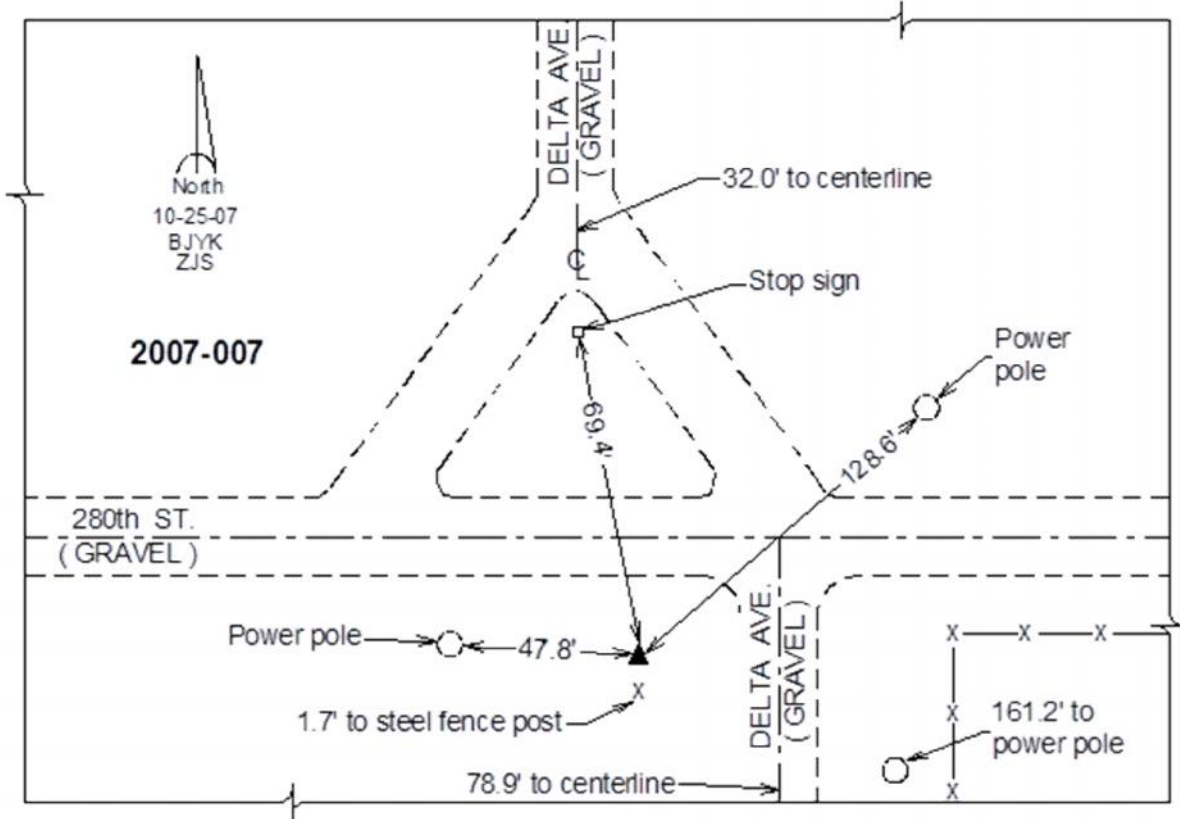
Designation: 2007-007 Cedar Co GPS Control Pt

NAD 83(NA2011) Latitude: **N41°41'06.79829"** Longitude: **W91°18'27.88596"**
 NAVD 88 Ortho Height: **782.76sft** Ellip. Ht: **675.65sft** **Geoid12A**

Iowa South Zone (1402) Northing: **621540.54sft** Easting: **2239168.94sft**
 Mapping Angle: **1°26'39"** Combination Scale Factor: **0.999951814**

IaRCS Zone 10 Northing: **7946232.171sft** Easting: **20598042.965sft**
 Mapping Angle: **00° 14' 22"** Combination Scale Factor: **0.999990965**

Monument Type: Berntsen 3/4" Top Security Rod Monument with a 2-1/2" dia. domed survey cap and permanent magnet encased in a white PVC pipe with a NGS style alum. access cover.



This document was prepared by Dan Corbin, Inc. on September 30, 2015 for Cedar County, Iowa.