

Cedar County, Iowa
Horizontal Datum: **NAD 83(2011)** - Vertical Datum: **NAVD 1988**
Iowa State Plane South Zone (1402)
Iowa Regional Coordinate System, Zone 10. Cedar Rapids (LCC)
US Survey Feet
2015

Point Name: **9**

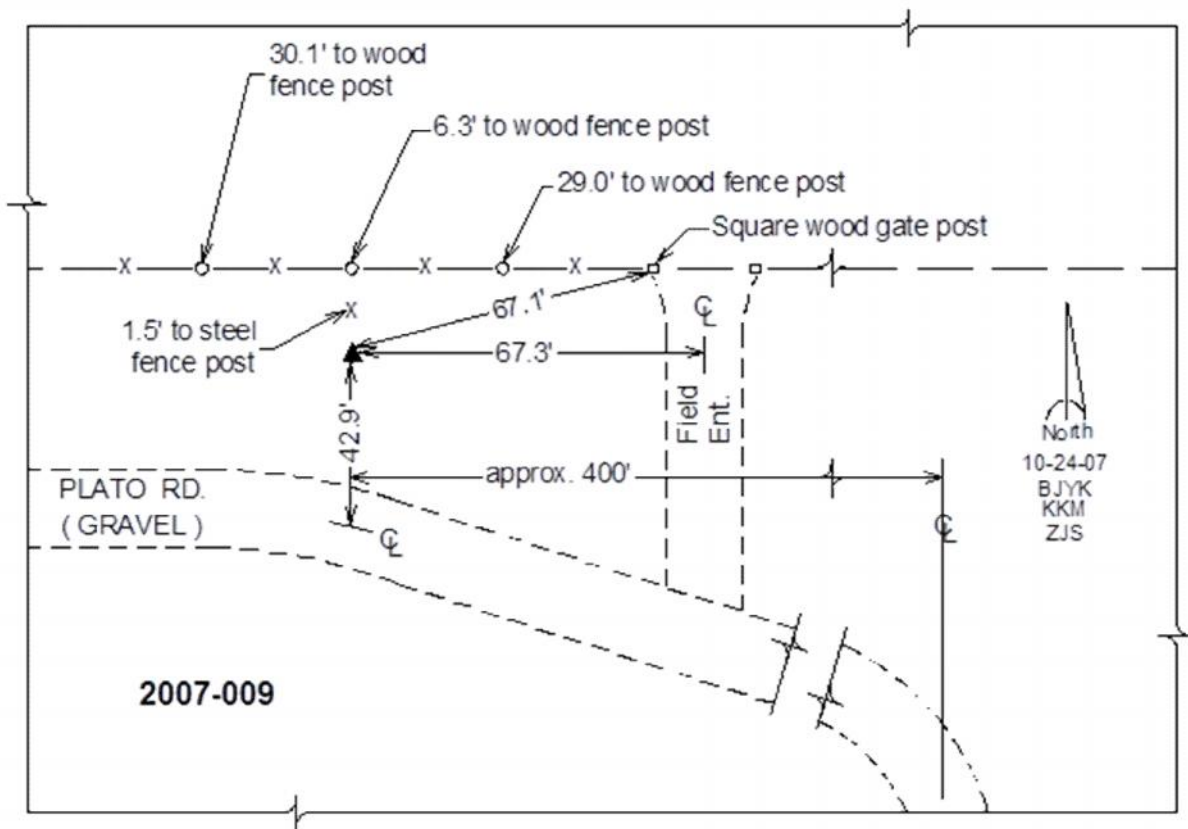
Designation: 2007-009 Cedar Co GPS Control Pt

NAD 83(NA2011) Latitude: **N41°46'08.68225"** Longitude: **W91°18'39.01819"**
NAVD 88 Ortho Height: **824.98sft** Ellip. Ht: **717.95sft** **Geoid12A**

Iowa South Zone (1402) Northing: **652066.29sft** Easting: **2237555.59sft**
Mapping Angle: **1°26'31"** Combination Scale Factor: **0.999963243**

IaRCS Zone 10 Northing: **7976786.054sft** Easting: **20597071.707sft**
Mapping Angle: **00° 14' 14"** Combination Scale Factor: **0.999986240**

Monument Type: Berntsen 3/4" Top Security Rod Monument with a 2-1/2" dia. domed survey cap and permanent magnet encased in a white PVC pipe with a NGS style alum. access cover.



This document was prepared by Dan Corbin, Inc. on September 30, 2015 for Cedar County, Iowa.