

Cedar County, Iowa
Horizontal Datum: **NAD 83(2011)** - Vertical Datum: **NAVD 1988**
Iowa State Plane South Zone (1402)
Iowa Regional Coordinate System, Zone 10. Cedar Rapids (LCC)
US Survey Feet
2015

Point Name: **14**

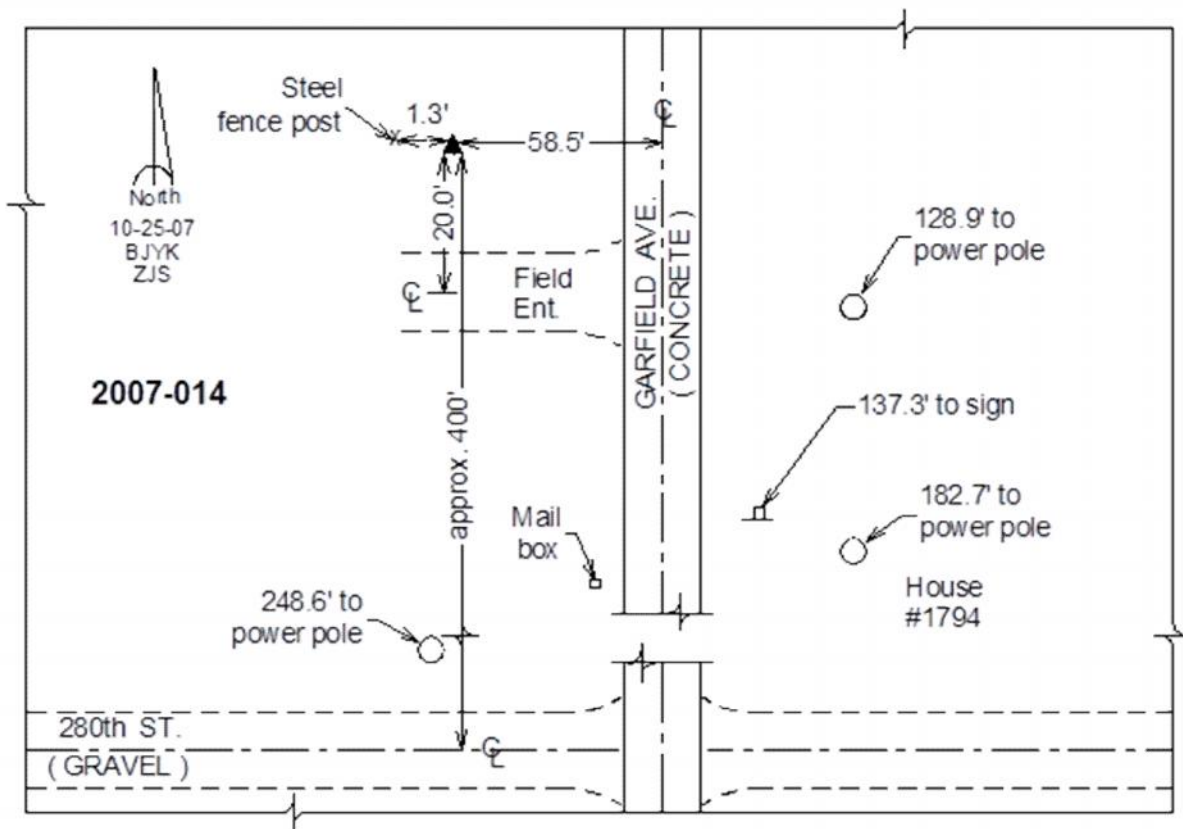
Designation: 2007-014 Cedar Co GPS Control Pt

NAD 83(NA2011) Latitude: **N41°41'10.82705"** Longitude: **W91°14'59.21422"**
NAVD 88 Ortho Height: **803.17sft** Ellip. Ht: **696.05sft** **Geoid12A**

Iowa South Zone (1402) Northing: **622352.46sft** Easting: **2254986.24sft**
Mapping Angle: **1°28'56"** Combination Scale Factor: **0.999951005**

IaRCS Zone 10 Northing: **7946711.464sft** Easting: **20613874.455sft**
Mapping Angle: **00° 16' 41"** Combination Scale Factor: **0.999989938**

Monument Type: Berntsen 3/4" Top Security Rod Monument with a 2-1/2" dia. domed survey cap and permanent magnet encased in a white PVC pipe with a NGS style alum. access cover.



This document was prepared by Dan Corbin, Inc. on September 30, 2015 for Cedar County, Iowa.