

**Cedar County, Iowa**  
 Horizontal Datum: **NAD 83(2011)** - Vertical Datum: **NAVD 1988**  
 Iowa State Plane South Zone (1402)  
 Iowa Regional Coordinate System, Zone 10. Cedar Rapids (LCC)  
 US Survey Feet  
**2015**

Point Name: **20**

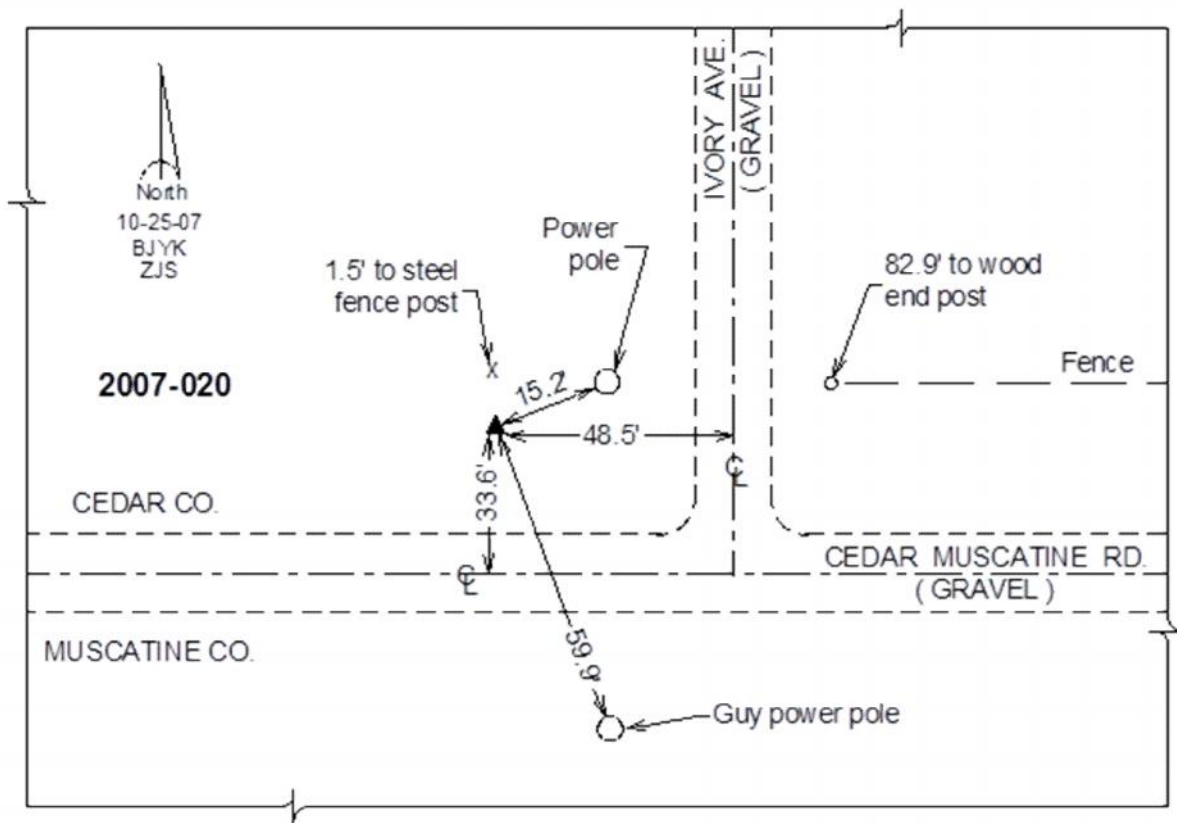
**Designation:** 2007-020 Cedar Co GPS Control Pt

NAD 83(NA2011) Latitude: **N41°35'52.60371"** Longitude: **W91°11'46.66429"**  
 NAVD 88 Ortho Height: **714.99sft** Ellip. Ht: **607.69sft** **Geoid12A**

**Iowa South Zone (1402)** Northing: **590536.45sft** Easting: **2270443.70sft**  
 Mapping Angle: **1°31'03"** Combination Scale Factor: **0.999943344**

**IaRCS Zone 10** Northing: **7914576.167sft** Easting: **20628660.713sft**  
 Mapping Angle: **00° 18' 49"** Combination Scale Factor: **0.999999290**

**Monument Type:** Berntsen 3/4" Top Security Rod Monument with a 2-1/2" dia. domed survey cap and permanent magnet encased in a white PVC pipe with a NGS style alum. access cover.



*This document was prepared by Dan Corbin, Inc. on September 30, 2015 for Cedar County, Iowa.*