

Cedar County, Iowa
 Horizontal Datum: **NAD 83(2011)** - Vertical Datum: **NAVD 1988**
 Iowa State Plane South Zone (1402)
 Iowa Regional Coordinate System, Zone 10. Cedar Rapids (LCC)
 US Survey Feet
2015

Point Name: **21**

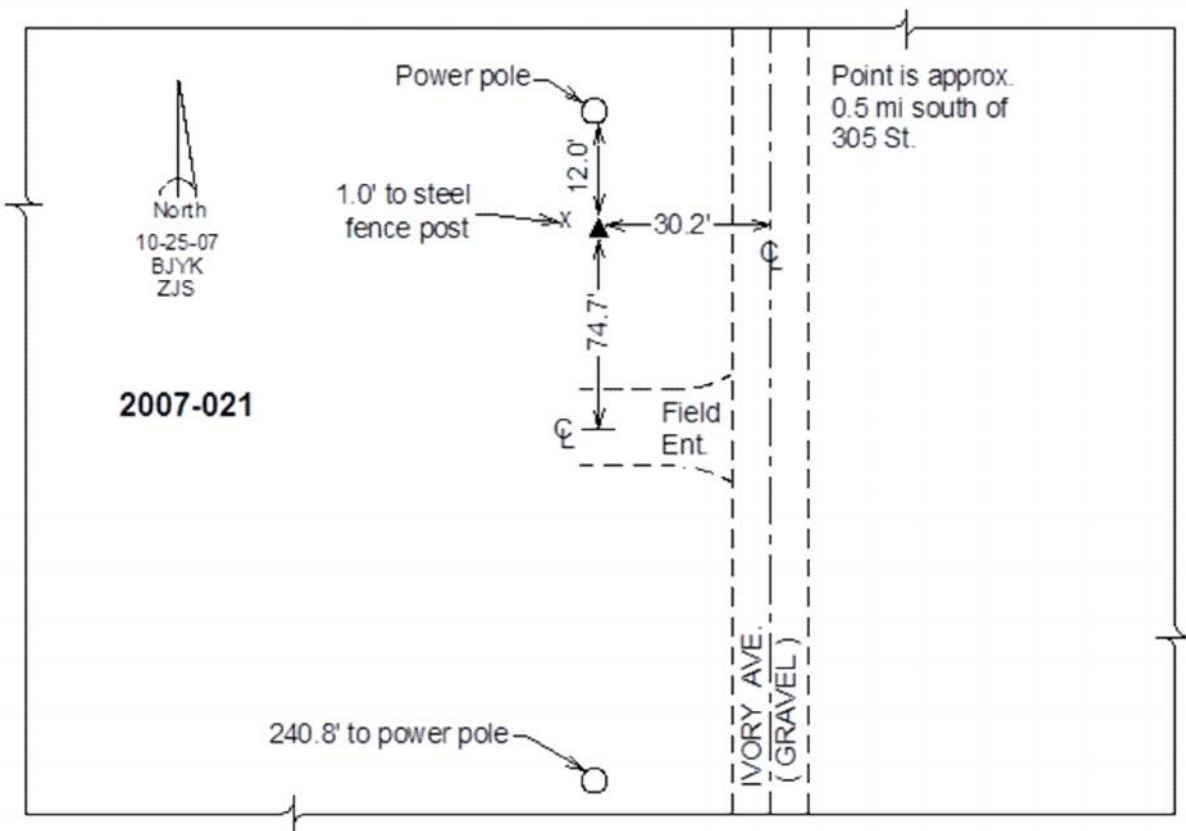
Designation: 2007-021 Cedar Co GPS Control Pt

NAD 83(NA2011) Latitude: **N41°38'33.08531"** Longitude: **W91°11'44.05647"**
 NAVD 88 Ortho Height: **770.15sft** Ellip. Ht: **662.95sft** **Geoid12A**

Iowa South Zone (1402) Northing: **606779.40sft** Easting: **2270211.48sft**
 Mapping Angle: **1°31'05"** Combination Scale Factor: **0.999946399**

IaRCS Zone 10 Northing: **7930821.248sft** Easting: **20628769.774sft**
 Mapping Angle: **00° 18' 51"** Combination Scale Factor: **0.999993766**

Monument Type: Berntsen 3/4" Top Security Rod Monument with a 2-1/2" dia. domed survey cap and permanent magnet encased in a white PVC pipe with a NGS style alum. access cover.



This document was prepared by Dan Corbin, Inc. on September 30, 2015 for Cedar County, Iowa.