

Cedar County, Iowa
Horizontal Datum: **NAD 83(2011)** - Vertical Datum: **NAVD 1988**
Iowa State Plane South Zone (1402)
Iowa Regional Coordinate System, Zone 10. Cedar Rapids (LCC)
US Survey Feet
2015

Point Name: **22**

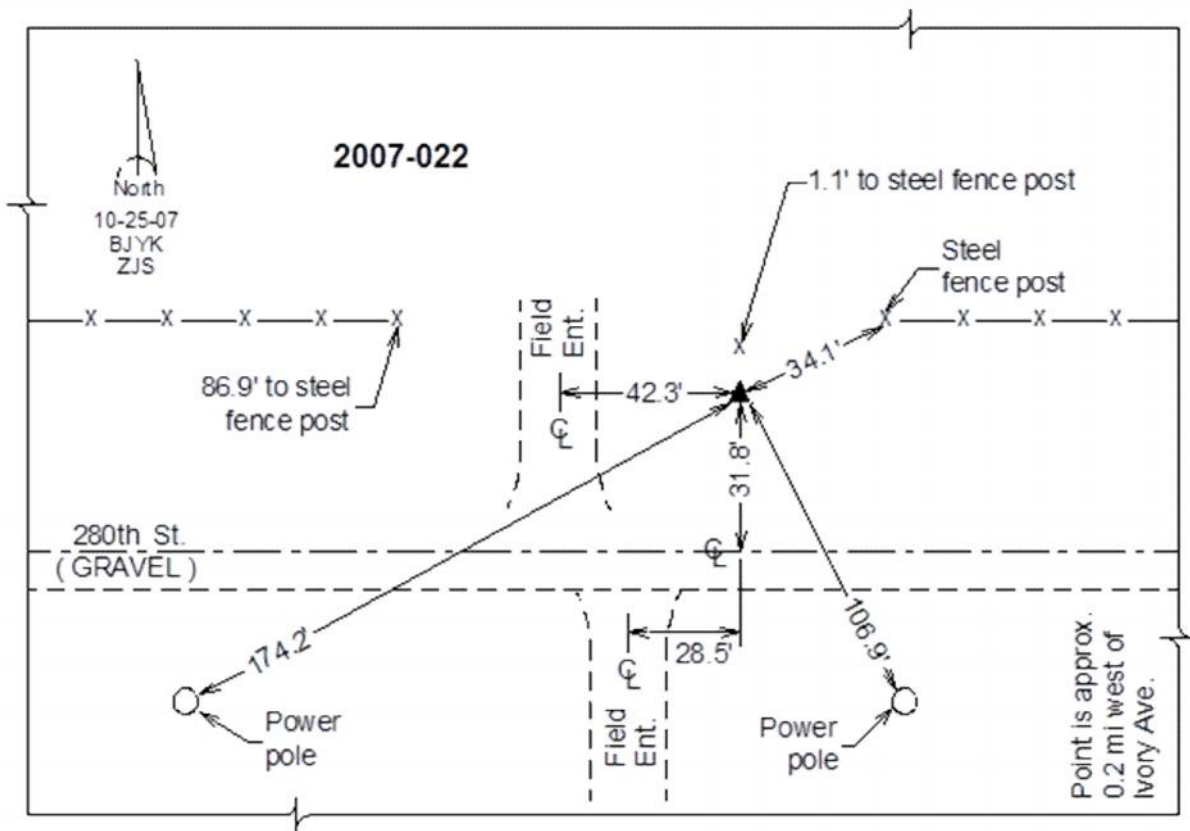
Designation: 2007-022 Cedar Co GPS Control Pt

NAD 83(NA2011) Latitude: **N41°41'05.79608"** Longitude: **W91°12'14.05926"**
NAVD 88 Ortho Height: **792.83sft** Ellip. Ht: **685.69sft** **Geoid12A**

Iowa South Zone (1402) Northing: **622170.85sft** Easting: **2267526.35sft**
Mapping Angle: **1°30'45"** Combination Scale Factor: **0.999951294**

IaRCS Zone 10 Northing: **7946266.383sft** Easting: **20626408.472sft**
Mapping Angle: **00° 18' 31"** Combination Scale Factor: **0.999990497**

Monument Type: Berntsen 3/4" Top Security Rod Monument with a 2-1/2" dia. domed survey cap and permanent magnet encased in a white PVC pipe with a NGS style alum. access cover.



This document was prepared by Dan Corbin, Inc. on September 30, 2015 for Cedar County, Iowa.