

Cedar County, Iowa
Horizontal Datum: **NAD 83(2011)** - Vertical Datum: **NAVD 1988**
Iowa State Plane South Zone (1402)
Iowa Regional Coordinate System, Zone 10. Cedar Rapids (LCC)
US Survey Feet
2015

Point Name: **24**

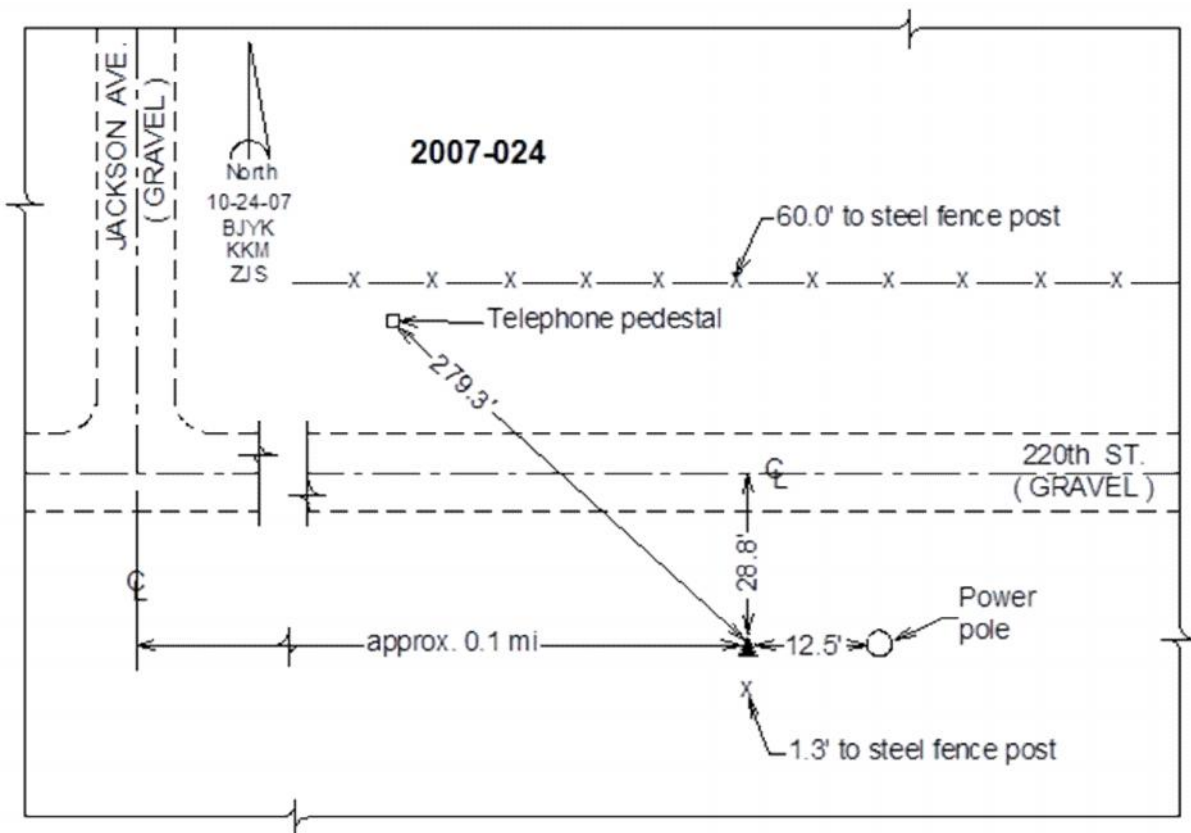
Designation: 2007-024 Cedar Co GPS Control Pt

NAD 83(NA2011) Latitude: **N41°46'18.93747"** Longitude: **W91°11'19.21490"**
NAVD 88 Ortho Height: **773.53sft** Ellip. Ht: **666.48sft** **Geoid12A**

Iowa South Zone (1402) Northing: **653966.06sft** Easting: **2270844.09sft**
Mapping Angle: **1°31'21"** Combination Scale Factor: **0.999966193**

IaRCS Zone 10 Northing: **7977985.856sft** Easting: **20630393.548sft**
Mapping Angle: **00° 19' 08"** Combination Scale Factor: **0.999988651**

Monument Type: Berntsen 3/4" Top Security Rod Monument with a 2-1/2" dia. domed survey cap and permanent magnet encased in a white PVC pipe with a NGS style alum. access cover.



This document was prepared by Dan Corbin, Inc. on September 30, 2015 for Cedar County, Iowa.