

Cedar County, Iowa
Horizontal Datum: **NAD 83(2011)** - Vertical Datum: **NAVD 1988**
Iowa State Plane South Zone (1402)
Iowa Regional Coordinate System, Zone 10. Cedar Rapids (LCC)
US Survey Feet
2015

Point Name: **26**

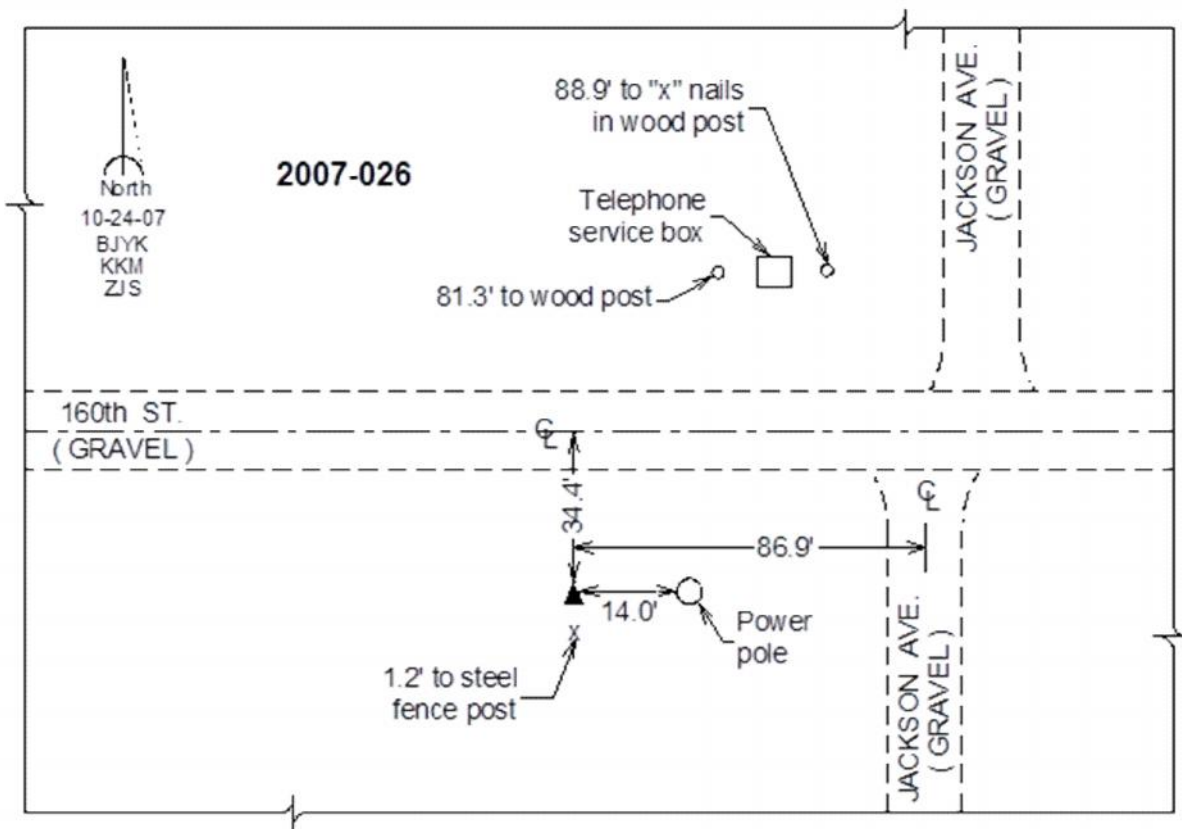
Designation: 2007-026 Cedar Co GPS Control Pt

NAD 83(NA2011) Latitude: **N41°51'33.71973"** Longitude: **W91°11'29.35920"**
NAVD 88 Ortho Height: **879.65sft** Ellip. Ht: **772.74sft** **Geoid12A**

Iowa South Zone (1402) Northing: **685797.68sft** Easting: **2269230.14sft**
Mapping Angle: **1°31'14"** Combination Scale Factor: **0.999977515**

IaRCS Zone 10 Northing: **8009844.810sft** Easting: **20629448.614sft**
Mapping Angle: **00° 19' 01"** Combination Scale Factor: **0.999983093**

Monument Type: Berntsen 3/4" Top Security Rod Monument with a 2-1/2" dia. domed survey cap and permanent magnet encased in a white PVC pipe with a NGS style alum. access cover.



This document was prepared by Dan Corbin, Inc. on September 30, 2015 for Cedar County, Iowa.