

Cedar County, Iowa
Horizontal Datum: **NAD 83(2011)** - Vertical Datum: **NAVD 1988**
Iowa State Plane South Zone (1402)
Iowa Regional Coordinate System, Zone 10. Cedar Rapids (LCC)
US Survey Feet
2015

Point Name: **27**

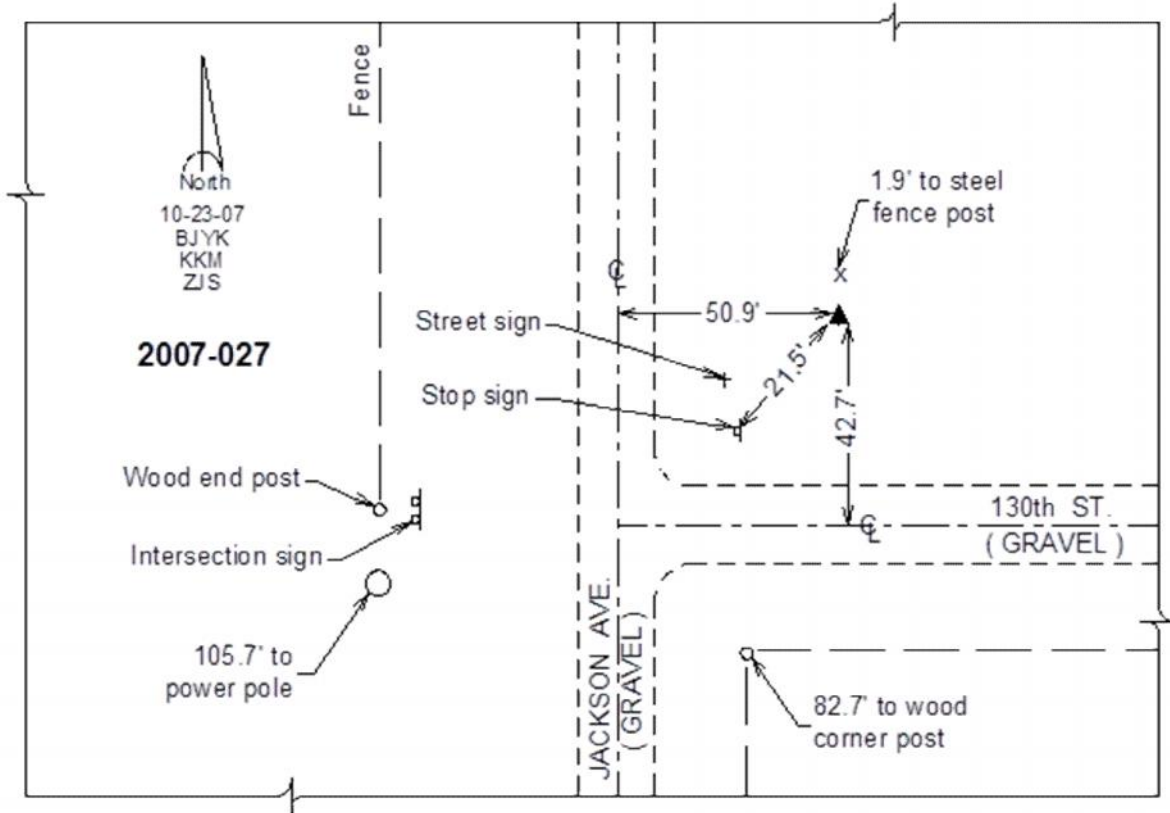
Designation: 2007-027 Cedar Co GPS Control Pt

NAD 83(NA2011) Latitude: **N41°54'12.35185"** Longitude: **W91°11'27.32467"**
NAVD 88 Ortho Height: **856.71sft** Ellip. Ht: **749.81sft** **Geoid12A**

Iowa South Zone (1402) Northing: **701853.74sft** Easting: **2268957.83sft**
Mapping Angle: **1°31'16"** Combination Scale Factor: **0.999987757**

IaRCS Zone 10 Northing: **8025903.076sft** Easting: **20629513.644sft**
Mapping Angle: **00° 19' 02"** Combination Scale Factor: **0.999984834**

Monument Type: Berntsen 3/4" Top Security Rod Monument with a 2-1/2" dia. domed survey cap and permanent magnet encased in a white PVC pipe with a NGS style alum. access cover.



This document was prepared by Dan Corbin, Inc. on September 30, 2015 for Cedar County, Iowa.