

Cedar County, Iowa
 Horizontal Datum: **NAD 83(2011)** - Vertical Datum: **NAVD 1988**
 Iowa State Plane South Zone (1402)
 Iowa Regional Coordinate System, Zone 10. Cedar Rapids (LCC)
 US Survey Feet
2015

Point Name: **29**

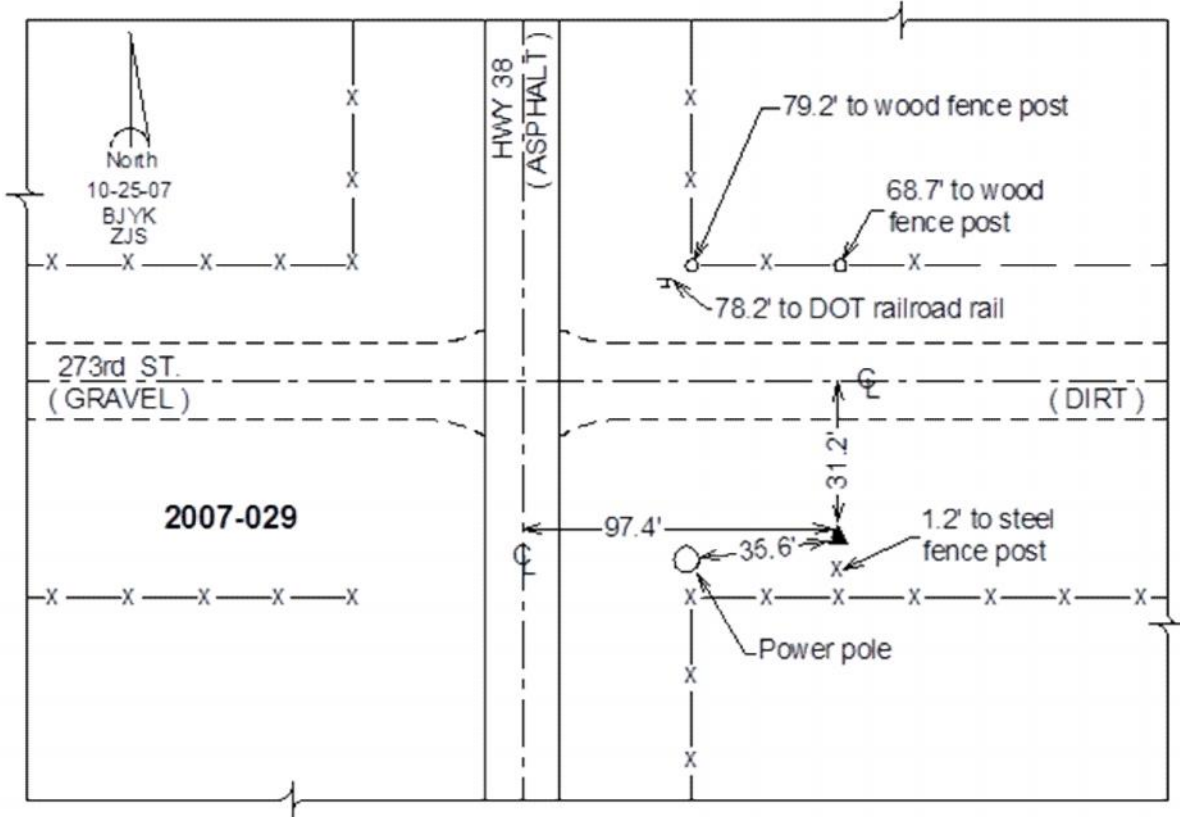
Designation: 2007-029 Cedar Co GPS Control Pt

NAD 83(NA2011) Latitude: **N41°41'30.40841"** Longitude: **W91°07'55.58992"**
 NAVD 88 Ortho Height: **758.55sft** Ellip. Ht: **651.37sft** **Geoid12A**

Iowa South Zone (1402) Northing: **625186.87sft** Easting: **2287062.98sft**
 Mapping Angle: **1°33'35"** Combination Scale Factor: **0.999953946**

IaRCS Zone 10 Northing: **7948871.504sft** Easting: **20646004.904sft**
 Mapping Angle: **00° 21' 24"** Combination Scale Factor: **0.999991840**

Monument Type: Berntsen 3/4" Top Security Rod Monument with a 2-1/2" dia. domed survey cap and permanent magnet encased in a white PVC pipe with a NGS style alum. access cover.



This document was prepared by Dan Corbin, Inc. on September 30, 2015 for Cedar County, Iowa.