

Cedar County, Iowa
Horizontal Datum: **NAD 83(2011)** - Vertical Datum: **NAVD 1988**
Iowa State Plane South Zone (1402)
Iowa Regional Coordinate System, Zone 10. Cedar Rapids (LCC)
US Survey Feet
2015

Point Name: **32**

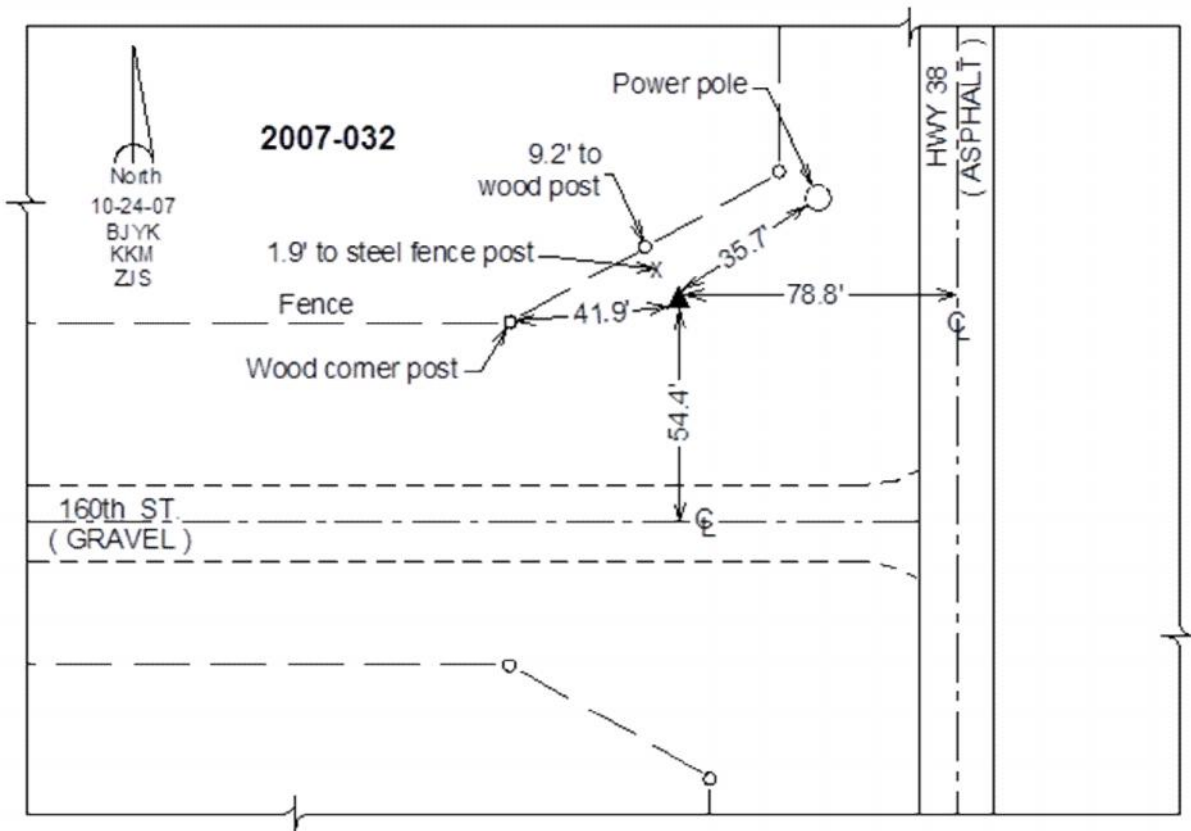
Designation: 2007-032 Cedar Co GPS Control Pt

NAD 83(NA2011) Latitude: **N41°51'34.07170"** Longitude: **W91°07'57.46551"**
NAVD 88 Ortho Height: **833.14sft** Ellip. Ht: **726.19sft** **Geoid12A**

Iowa South Zone (1402) Northing: **686264.22sft** Easting: **2285257.91sft**
Mapping Angle: **1°33'34"** Combination Scale Factor: **0.999979755**

IaRCS Zone 10 Northing: **8009974.625sft** Easting: **20645482.741sft**
Mapping Angle: **00° 21' 22"** Combination Scale Factor: **0.999985323**

Monument Type: Berntsen 3/4" Top Security Rod Monument with a 2-1/2" dia. domed survey cap and permanent magnet encased in a white PVC pipe with a NGS style alum. access cover.



This document was prepared by Dan Corbin, Inc. on September 30, 2015 for Cedar County, Iowa.