

Cedar County, Iowa
Horizontal Datum: **NAD 83(2011)** - Vertical Datum: **NAVD 1988**
Iowa State Plane South Zone (1402)
Iowa Regional Coordinate System, Zone 10. Cedar Rapids (LCC)
US Survey Feet
2015

Point Name: **34**

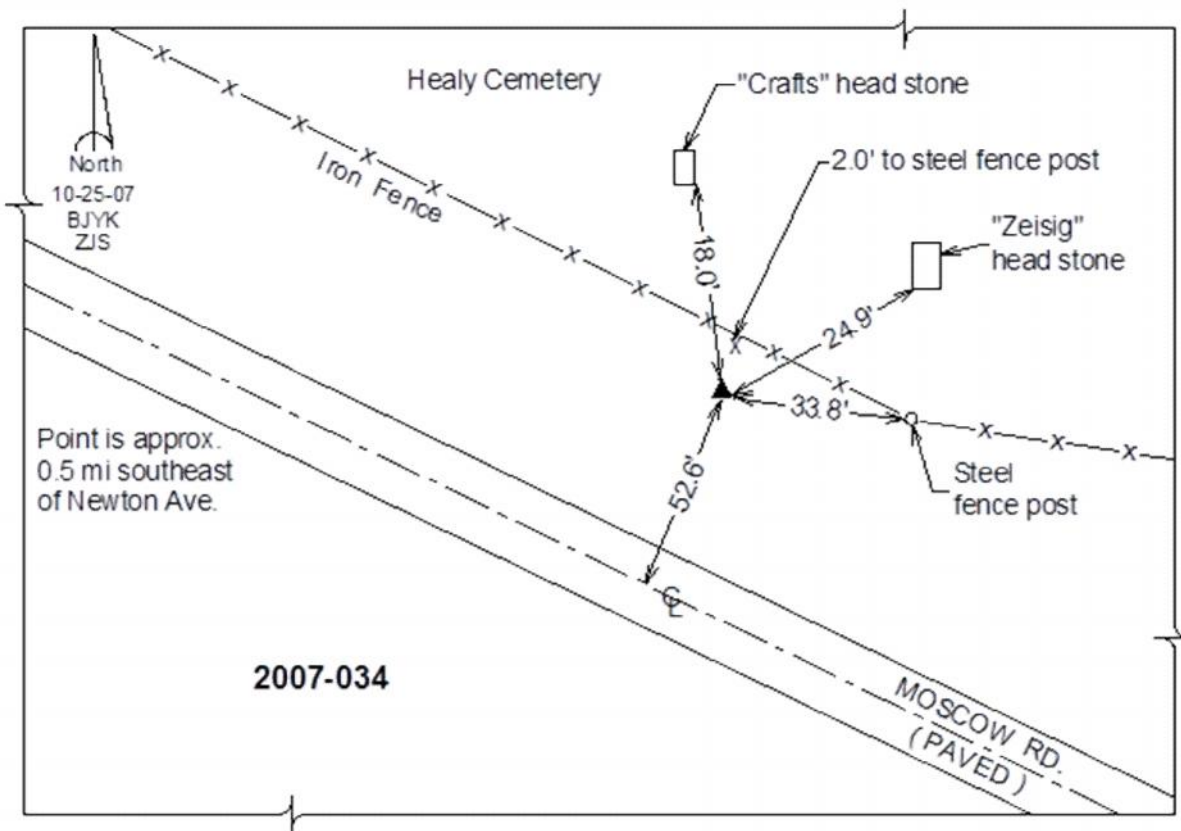
Designation: 2007-034 Cedar Co GPS Control Pt

NAD 83(NA2011) Latitude: **N41°35'59.29455"** Longitude: **W91°05'53.71158"**
NAVD 88 Ortho Height: **685.27sft** Ellip. Ht: **577.90sft** **Geoid12A**

Iowa South Zone (1402) Northing: **591938.65sft** Easting: **2297231.39sft**
Mapping Angle: **1°34'55"** Combination Scale Factor: **0.999944991**

IaRCS Zone 10 Northing: **7915415.551sft** Easting: **20655473.444sft**
Mapping Angle: **00° 22' 45"** Combination Scale Factor: **1.000000585**

Monument Type: Berntsen 3/4" Top Security Rod Monument with a 2-1/2" dia. domed survey cap and permanent magnet encased in a white PVC pipe with a NGS style alum. access cover.



This document was prepared by Dan Corbin, Inc. on September 30, 2015 for Cedar County, Iowa.