

Cedar County, Iowa
Horizontal Datum: **NAD 83(2011)** - Vertical Datum: **NAVD 1988**
Iowa State Plane South Zone (1402)
Iowa Regional Coordinate System, Zone 10. Cedar Rapids (LCC)
US Survey Feet
2015

Point Name: **37**

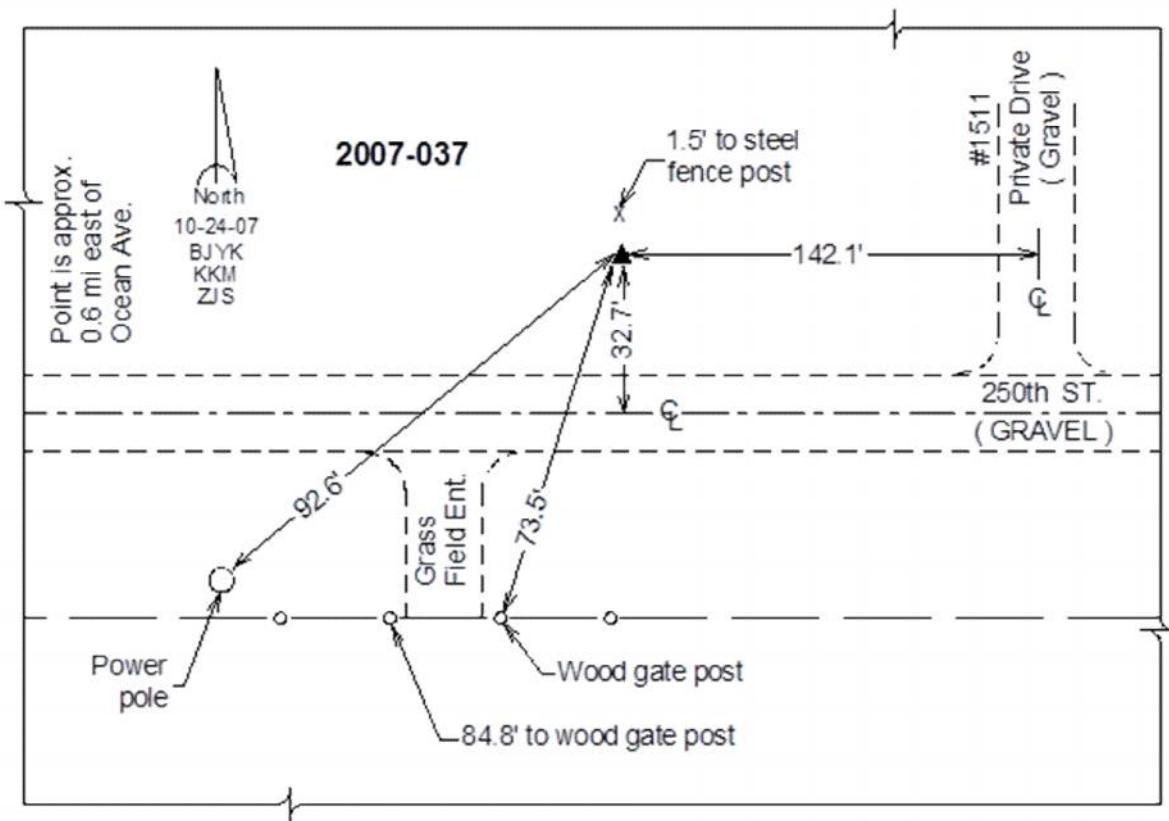
Designation: 2007-037 Cedar Co GPS Control Pt

NAD 83(NA2011) Latitude: **N41°43'41.32860"** Longitude: **W91°04'19.64906"**
NAVD 88 Ortho Height: **750.33sft** Ellip. Ht: **643.17sft** **Geoid12A**

Iowa South Zone (1402) Northing: **638884.95sft** Easting: **2303069.83sft**
Mapping Angle: **1°35'57"** Combination Scale Factor: **0.999959978**

IaRCS Zone 10 Northing: **7962230.982sft** Easting: **20662296.363sft**
Mapping Angle: **00° 23' 48"** Combination Scale Factor: **0.999990873**

Monument Type: Berntsen 3/4" Top Security Rod Monument with a 2-1/2" dia. domed survey cap and permanent magnet encased in a white PVC pipe with a NGS style alum. access cover.



This document was prepared by Dan Corbin, Inc. on September 30, 2015 for Cedar County, Iowa.