

Cedar County, Iowa
 Horizontal Datum: **NAD 83(2011)** - Vertical Datum: **NAVD 1988**
 Iowa State Plane South Zone (1402)
 Iowa Regional Coordinate System, Zone 10. Cedar Rapids (LCC)
 US Survey Feet
2015

Point Name: **39**

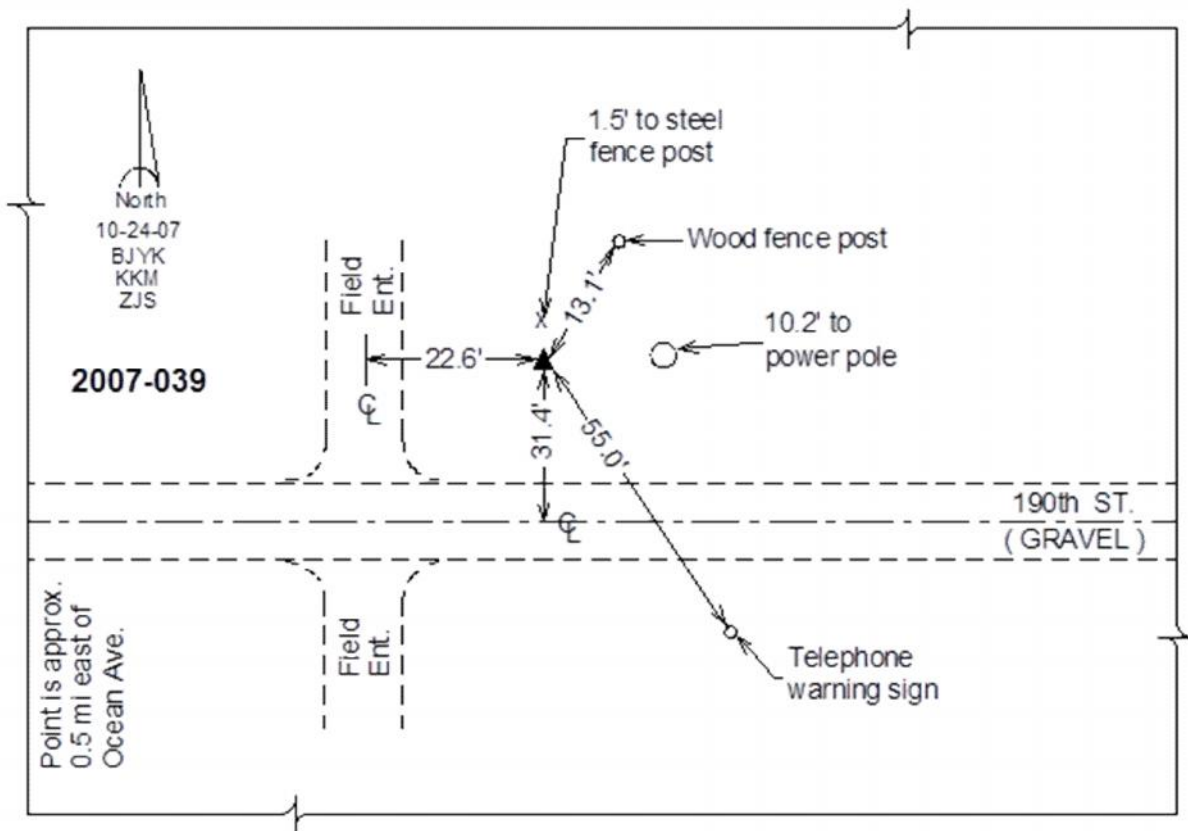
Designation: 2007-039 Cedar Co GPS Control Pt

NAD 83(NA2011) Latitude: **N41°48'57.08991"** Longitude: **W91°04'26.34701"**
 NAVD 88 Ortho Height: **827.58sft** Ellip. Ht: **720.55sft** **Geoid12A**

Iowa South Zone (1402) Northing: **670820.22sft** Easting: **2301670.83sft**
 Mapping Angle: **1°35'53"** Combination Scale Factor: **0.999971556**

IaRCS Zone 10 Northing: **7994189.294sft** Easting: **20661567.969sft**
 Mapping Angle: **00° 23' 43"** Combination Scale Factor: **0.999985536**

Monument Type: Berntsen 3/4" Top Security Rod Monument with a 2-1/2" dia. domed survey cap and permanent magnet encased in a white PVC pipe with a NGS style alum. access cover.



This document was prepared by Dan Corbin, Inc. on September 30, 2015 for Cedar County, Iowa.