

Cedar County, Iowa
Horizontal Datum: **NAD 83(2011)** - Vertical Datum: **NAVD 1988**
Iowa State Plane South Zone (1402)
Iowa Regional Coordinate System, Zone 10. Cedar Rapids (LCC)
US Survey Feet
2015

Point Name: **40**

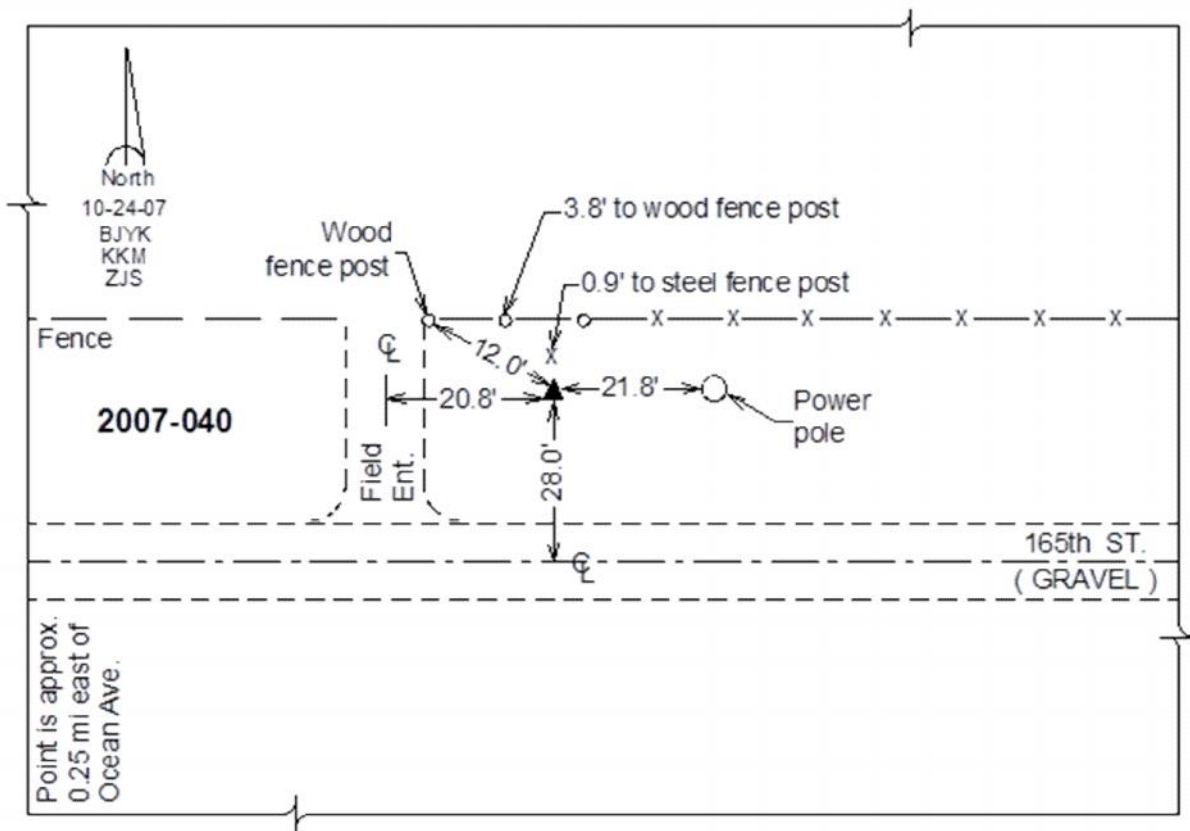
Designation: 2007-040 Cedar Co GPS Control Pt

NAD 83(NA2011) Latitude: **N41°51'08.74646"** Longitude: **W91°04'42.51291"**
NAVD 88 Ortho Height: **855.43sft** Ellip. Ht: **748.45sft** **Geoid12A**

Iowa South Zone (1402) Northing: **684107.73sft** Easting: **2300076.22sft**
Mapping Angle: **1°35'42"** Combination Scale Factor: **0.999977288**

IaRCS Zone 10 Northing: **8007507.490sft** Easting: **20660252.599sft**
Mapping Angle: **00° 23' 32"** Combination Scale Factor: **0.999984209**

Monument Type: Berntsen 3/4" Top Security Rod Monument with a 2-1/2" dia. domed survey cap and permanent magnet encased in a white PVC pipe with a NGS style alum. access cover.



This document was prepared by Dan Corbin, Inc. on September 30, 2015 for Cedar County, Iowa.