

Cedar County, Iowa
Horizontal Datum: **NAD 83(2011)** - Vertical Datum: **NAVD 1988**
Iowa State Plane South Zone (1402)
Iowa Regional Coordinate System, Zone 10. Cedar Rapids (LCC)
US Survey Feet
2015

Point Name: **42**

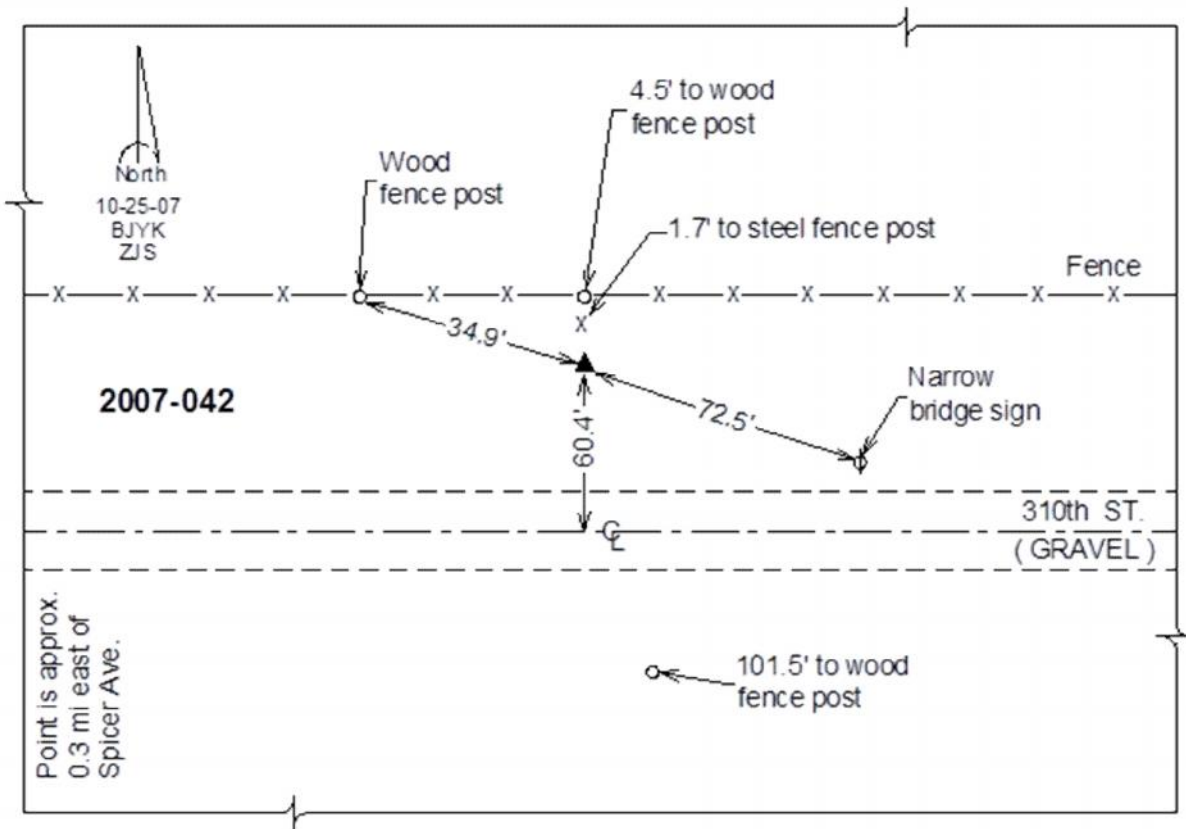
Designation: 2007-042 Cedar Co GPS Control Pt

NAD 83(NA2011) Latitude: **N41°38'28.34973"** Longitude: **W91°00'40.10093"**
NAVD 88 Ortho Height: **731.74sft** Ellip. Ht: **624.37sft** **Geoid12A**

Iowa South Zone (1402) Northing: **607689.06sft** Easting: **2320616.80sft**
Mapping Angle: **1°38'22"** Combination Scale Factor: **0.999948063**

IaRCS Zone 10 Northing: **7930672.492sft** Easting: **20679185.475sft**
Mapping Angle: **00° 26' 14"** Combination Scale Factor: **0.999995690**

Monument Type: Berntsen 3/4" Top Security Rod Monument with a 2-1/2" dia. domed survey cap and permanent magnet encased in a white PVC pipe with a NGS style alum. access cover.



This document was prepared by Dan Corbin, Inc. on September 30, 2015 for Cedar County, Iowa.