

Cedar County, Iowa
Horizontal Datum: **NAD 83(2011)** - Vertical Datum: **NAVD 1988**
Iowa State Plane South Zone (1402)
Iowa Regional Coordinate System, Zone 10. Cedar Rapids (LCC)
US Survey Feet
2015

Point Name: **45**

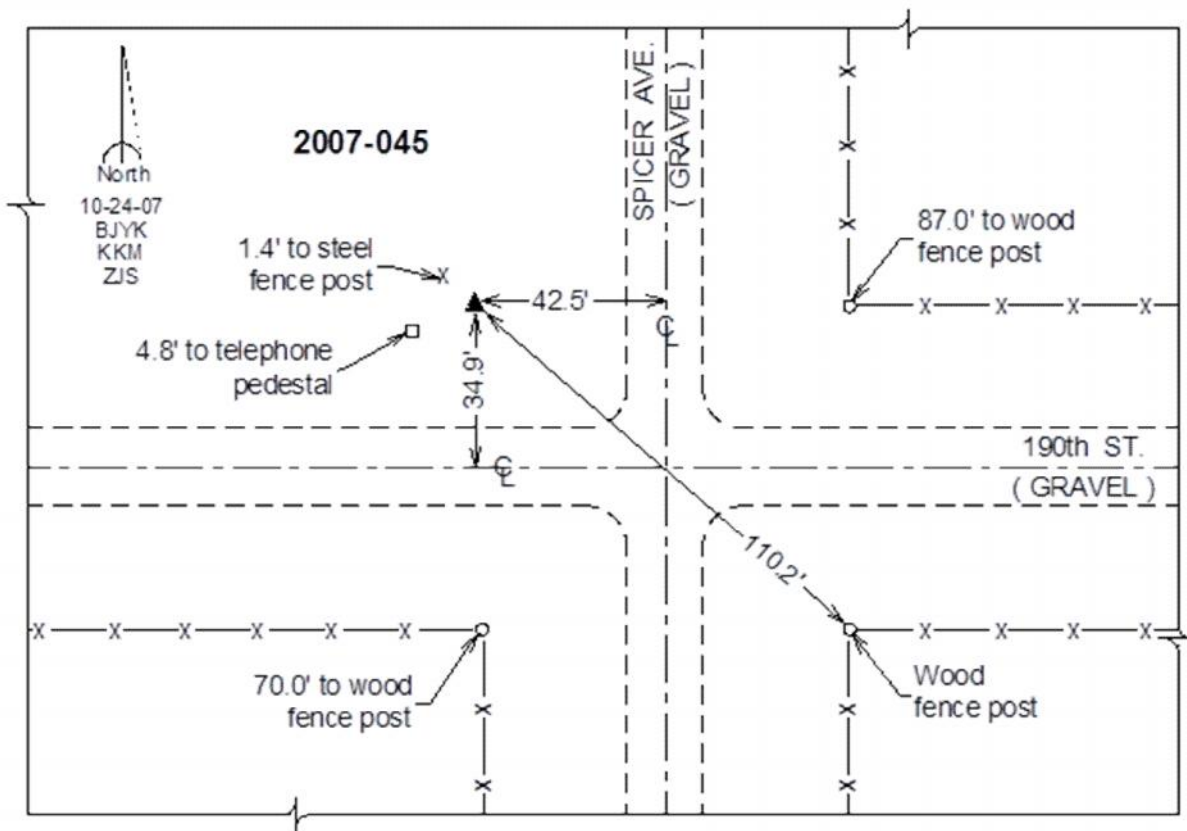
Designation: 2007-045 Cedar Co GPS Control Pt

NAD 83(NA2011) Latitude: **N41°48'56.06943"** Longitude: **W91°00'56.14314"**
NAVD 88 Ortho Height: **831.10sft** Ellip. Ht: **724.05sft** **Geoid12A**

Iowa South Zone (1402) Northing: **671166.19sft** Easting: **2317584.75sft**
Mapping Angle: **1°38'11"** Combination Scale Factor: **0.999971335**

IaRCS Zone 10 Northing: **7994201.227sft** Easting: **20677485.863sft**
Mapping Angle: **00° 26' 03"** Combination Scale Factor: **0.999985369**

Monument Type: Berntsen 3/4" Top Security Rod Monument with a 2-1/2" dia. domed survey cap and permanent magnet encased in a white PVC pipe with a NGS style alum. access cover.



This document was prepared by Dan Corbin, Inc. on September 30, 2015 for Cedar County, Iowa.