

Cedar County, Iowa
Horizontal Datum: **NAD 83(2011)** - Vertical Datum: **NAVD 1988**
Iowa State Plane South Zone (1402)
Iowa Regional Coordinate System, Zone 10. Cedar Rapids (LCC)
US Survey Feet
2015

Point Name: **46**

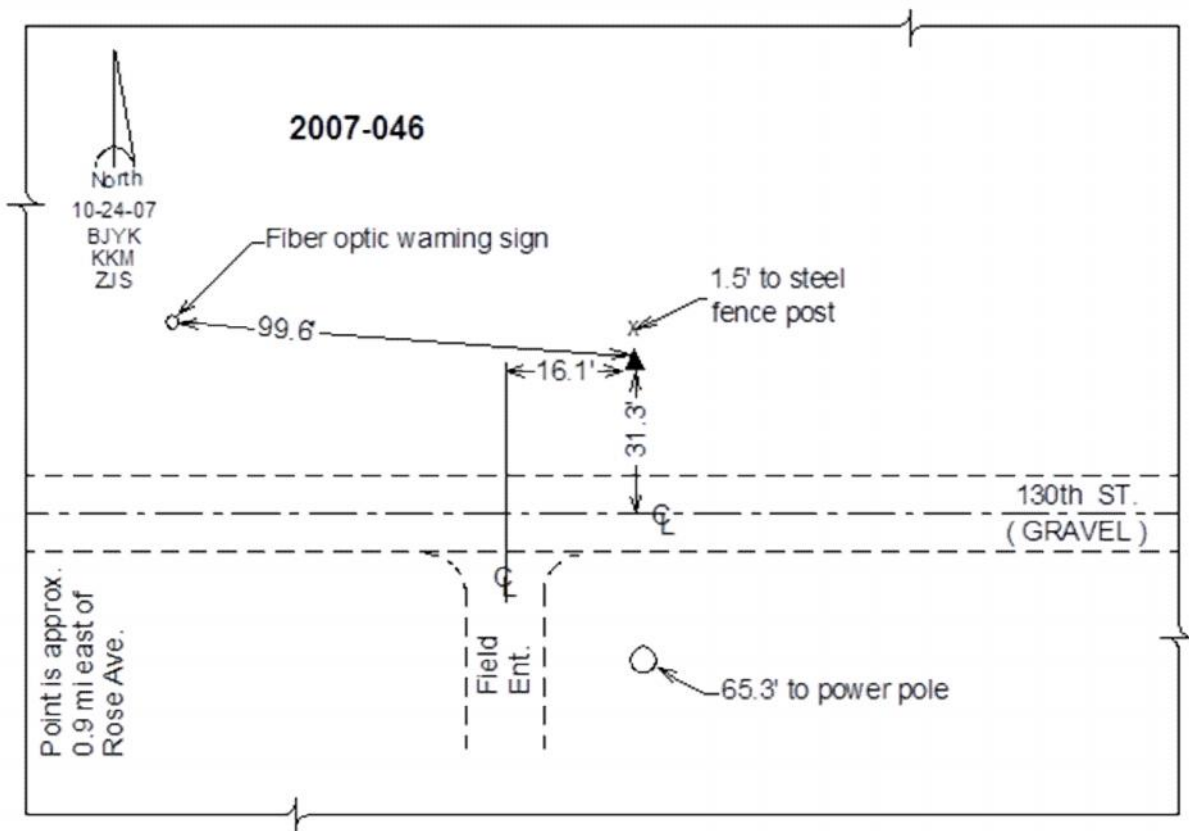
Designation: 2007-046 Cedar Co GPS Control Pt

NAD 83(NA2011) Latitude: **N41°54'11.15738"** Longitude: **W91°01'06.74220"**
NAVD 88 Ortho Height: **845.70sft** Ellip. Ht: **738.73sft** **Geoid12A**

Iowa South Zone (1402) Northing: **703025.02sft** Easting: **2315872.70sft**
Mapping Angle: **1°38'04"** Combination Scale Factor: **0.999988215**

IaRCS Zone 10 Northing: **8026089.145sft** Easting: **20676442.642sft**
Mapping Angle: **00° 25' 56"** Combination Scale Factor: **0.999985358**

Monument Type: Berntsen 3/4" Top Security Rod Monument with a 2-1/2" dia. domed survey cap and permanent magnet encased in a white PVC pipe with a NGS style alum. access cover.



This document was prepared by Dan Corbin, Inc. on September 30, 2015 for Cedar County, Iowa.