

Cedar County, Iowa
Horizontal Datum: **NAD 83(2011)** - Vertical Datum: **NAVD 1988**
Iowa State Plane South Zone (1402)
Iowa Regional Coordinate System, Zone 10. Cedar Rapids (LCC)
US Survey Feet
2015

Point Name: **47**

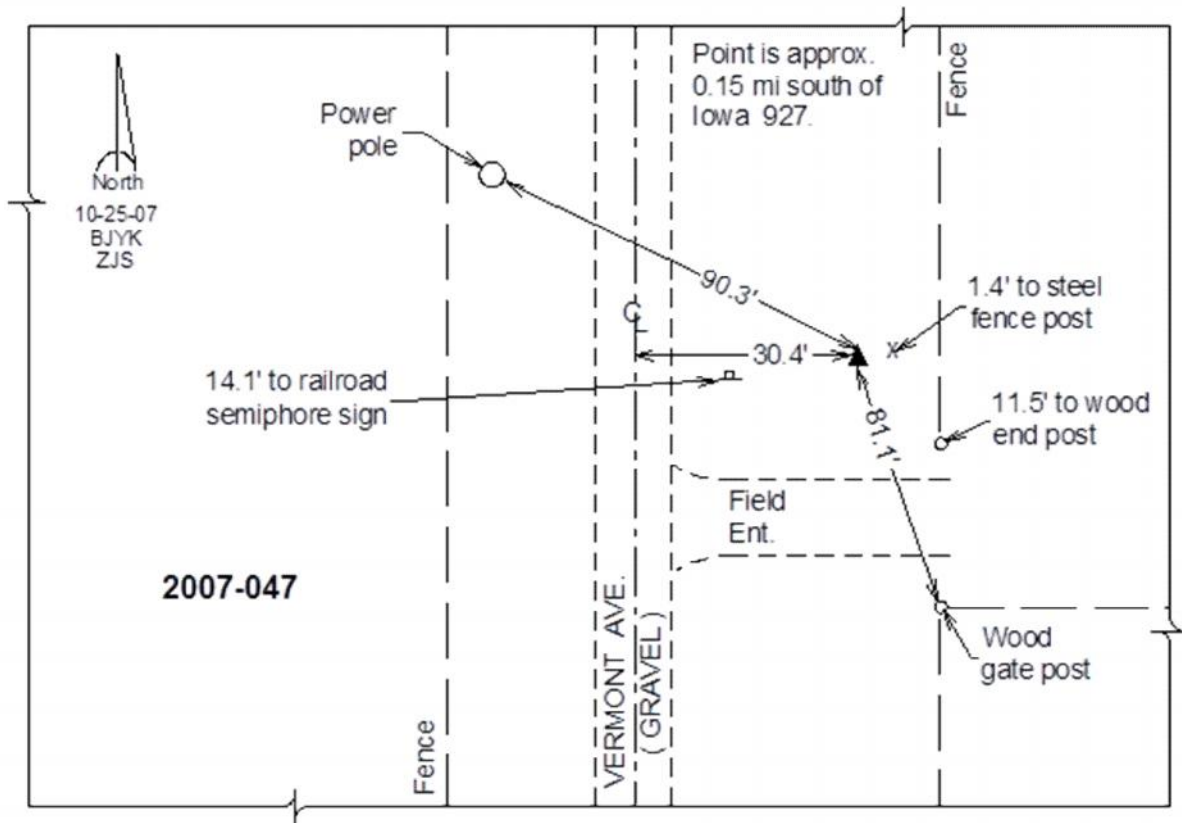
Designation: 2007-047 Cedar Co GPS Control Pt

NAD 83(NA2011) Latitude: **N41°35'50.86814"** Longitude: **W90°57'28.40938"**
NAVD 88 Ortho Height: **687.54sft** Ellip. Ht: **580.03sft** **Geoid12A**

Iowa South Zone (1402) Northing: **592176.97sft** Easting: **2335630.94sft**
Mapping Angle: **1°40'28"** Combination Scale Factor: **0.999944606**

IaRCS Zone 10 Northing: **7914848.040sft** Easting: **20693871.680sft**
Mapping Angle: **00° 28' 22"** Combination Scale Factor: **1.000000650**

Monument Type: Berntsen 3/4" Top Security Rod Monument with a 2-1/2" dia. domed survey cap and permanent magnet encased in a white PVC pipe with a NGS style alum. access cover.



This document was prepared by Dan Corbin, Inc. on September 30, 2015 for Cedar County, Iowa.