

Cedar County, Iowa
Horizontal Datum: **NAD 83(2011)** - Vertical Datum: **NAVD 1988**
Iowa State Plane South Zone (1402)
Iowa Regional Coordinate System, Zone 10. Cedar Rapids (LCC)
US Survey Feet
2015

Point Name: **48**

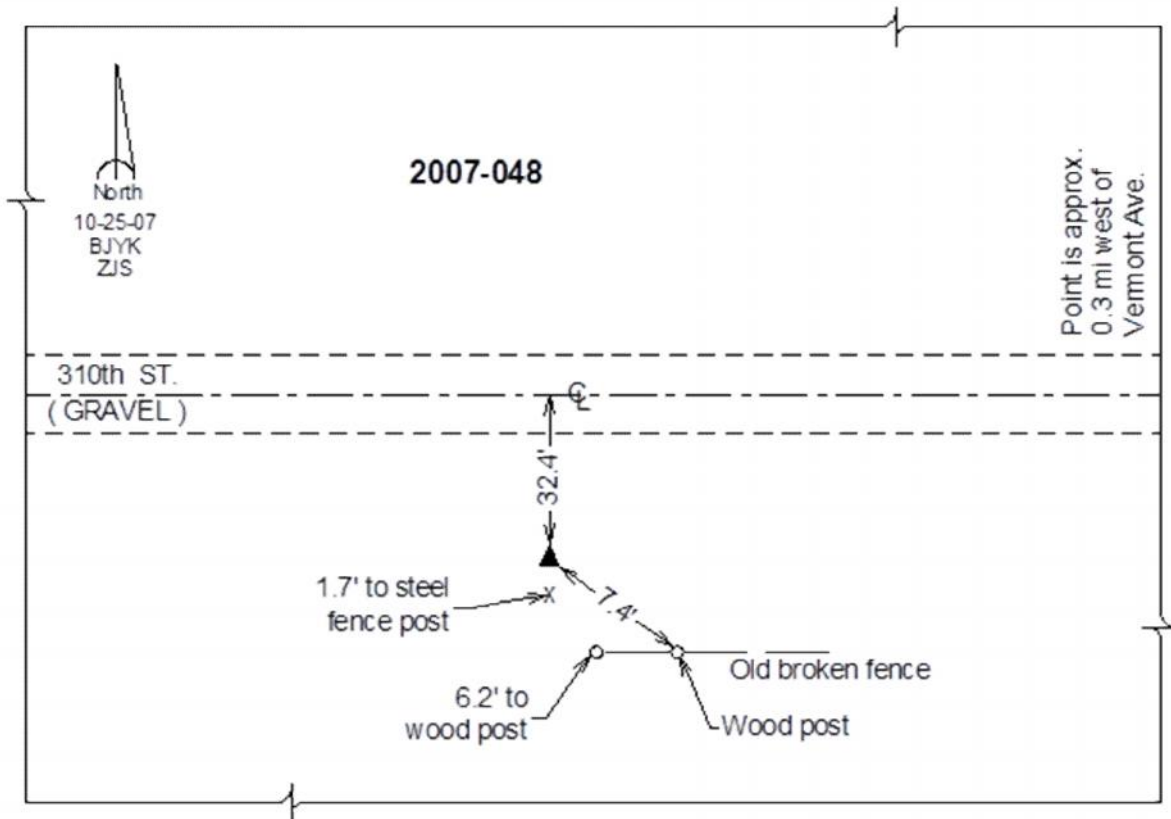
Designation: 2007-048 Cedar Co GPS Control Pt

NAD 83(NA2011) Latitude: **N41°38'26.83802"** Longitude: **W90°57'45.40507"**
NAVD 88 Ortho Height: **748.57sft** Ellip. Ht: **641.16sft** **Geoid12A**

Iowa South Zone (1402) Northing: **607919.29sft** Easting: **2333879.75sft**
Mapping Angle: **1°40'17"** Combination Scale Factor: **0.999947206**

IaRCS Zone 10 Northing: **7930624.445sft** Easting: **20692450.976sft**
Mapping Angle: **00° 28' 10"** Combination Scale Factor: **0.999994910**

Monument Type: Berntsen 3/4" Top Security Rod Monument with a 2-1/2" dia. domed survey cap and permanent magnet encased in a white PVC pipe with a NGS style alum. access cover.



This document was prepared by Dan Corbin, Inc. on September 30, 2015 for Cedar County, Iowa.