

Cedar County, Iowa
 Horizontal Datum: **NAD 83(2011)** - Vertical Datum: **NAVD 1988**
 Iowa State Plane South Zone (1402)
 Iowa Regional Coordinate System, Zone 10. Cedar Rapids (LCC)
 US Survey Feet
2015

Point Name: **49**

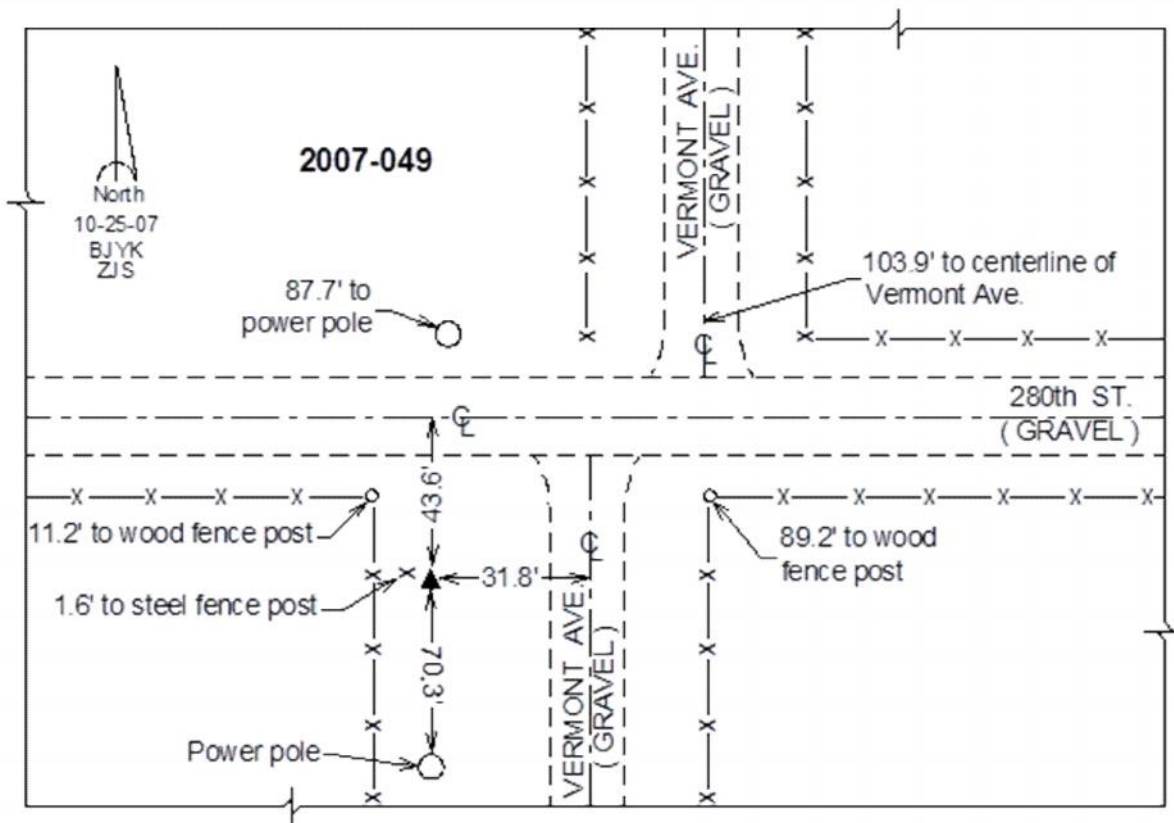
Designation: 2007-049 Cedar Co GPS Control Pt

NAD 83(NA2011) Latitude: **N41°41'03.18344"** Longitude: **W90°57'27.48059"**
 NAVD 88 Ortho Height: **776.40sft** Ellip. Ht: **669.10sft** **Geoid12A**

Iowa South Zone (1402) Northing: **623777.22sft** Easting: **2334777.65sft**
 Mapping Angle: **1°40'29"** Combination Scale Factor: **0.999951978**

IaRCS Zone 10 Northing: **7946460.746sft** Easting: **20693681.327sft**
 Mapping Angle: **00° 28' 22"** Combination Scale Factor: **0.999991324**

Monument Type: Berntsen 3/4" Top Security Rod Monument with a 2-1/2" dia. domed survey cap and permanent magnet encased in a white PVC pipe with a NGS style alum. access cover.



This document was prepared by Dan Corbin, Inc. on September 30, 2015 for Cedar County, Iowa.