

Cedar County, Iowa
Horizontal Datum: **NAD 83(2011)** - Vertical Datum: **NAVD 1988**
Iowa State Plane South Zone (1402)
Iowa Regional Coordinate System, Zone 10. Cedar Rapids (LCC)
US Survey Feet
2015

Point Name: **55**

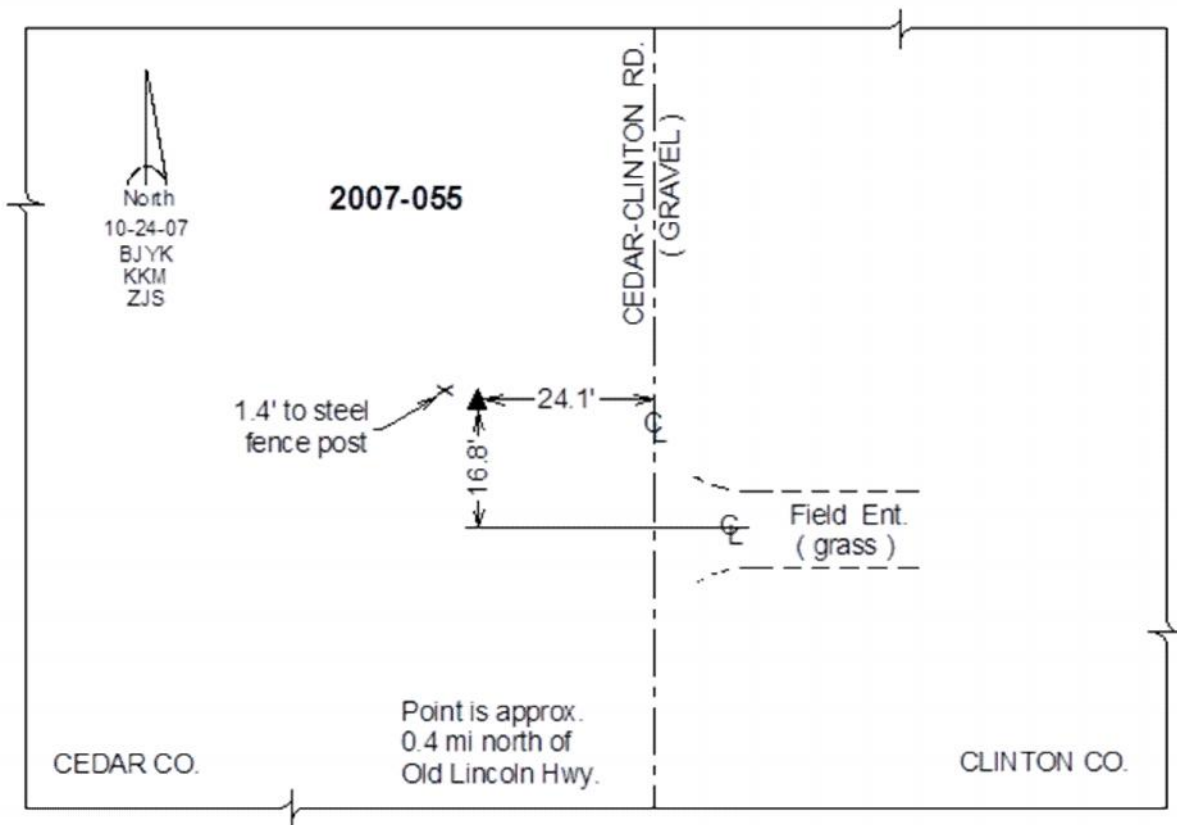
Designation: 2007-055 Cedar Co GPS Control Pt

NAD 83(NA2011) Latitude: **N41°51'27.09147"** Longitude: **W90°53'54.14423"**
NAVD 88 Ortho Height: **727.96sft** Ellip. Ht: **620.85sft** **Geoid12A**

Iowa South Zone (1402) Northing: **687380.50sft** Easting: **2349069.16sft**
Mapping Angle: **1°42'49"** Combination Scale Factor: **0.999984393**

IaRCS Zone 10 Northing: **8009751.805sft** Easting: **20709303.739sft**
Mapping Angle: **00° 30' 45"** Combination Scale Factor: **0.999990353**

Monument Type: Berntsen 3/4" Top Security Rod Monument with a 2-1/2" dia. domed survey cap and permanent magnet encased in a white PVC pipe with a NGS style alum. access cover.



This document was prepared by Dan Corbin, Inc. on September 30, 2015 for Cedar County, Iowa.