

Cedar County, Iowa
Horizontal Datum: **NAD 83(2011)** - Vertical Datum: **NAVD 1988**
Iowa State Plane South Zone (1402)
Iowa Regional Coordinate System, Zone 10. Cedar Rapids (LCC)
US Survey Feet
2015

Point Name: **56**

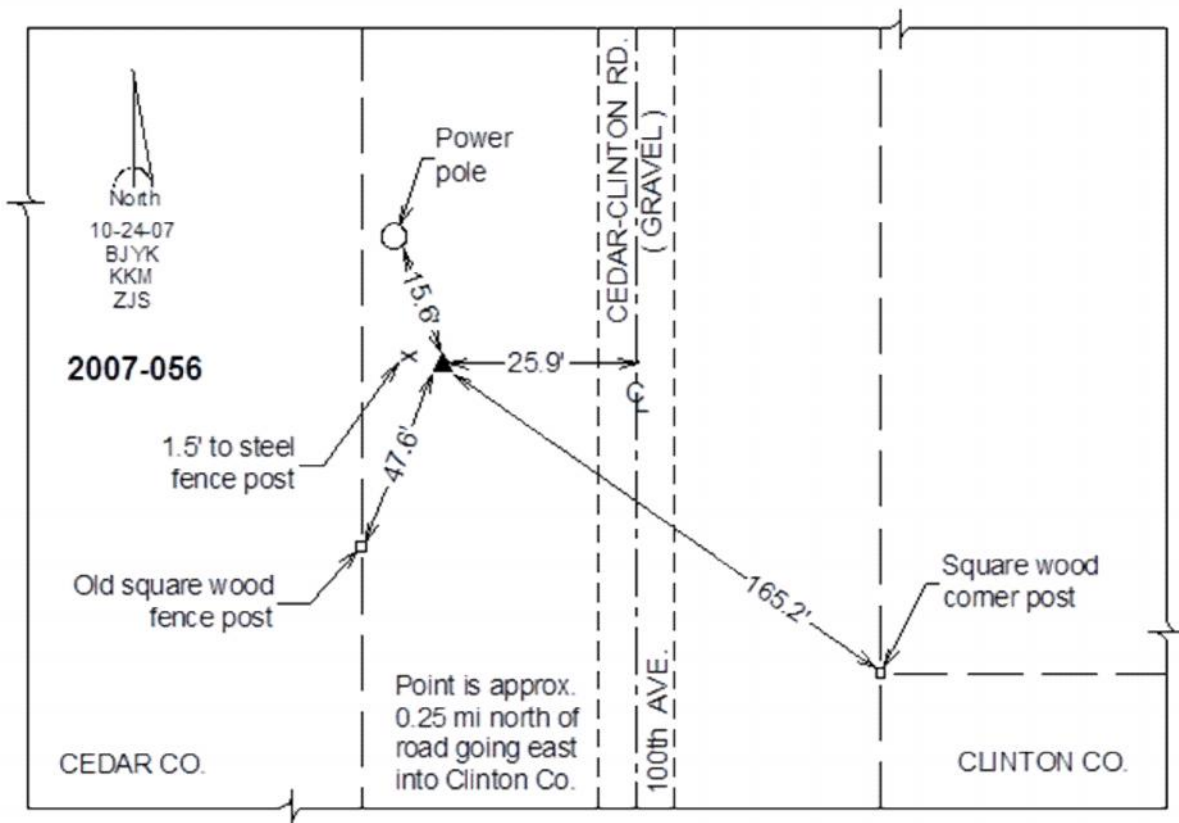
Designation: 2007-056 Cedar Co GPS Control Pt

NAD 83(NA2011) Latitude: **N41°53'57.51288"** Longitude: **W90°53'54.72542"**
NAVD 88 Ortho Height: **713.69sft** Ellip. Ht: **606.62sft** **Geoid12A**

Iowa South Zone (1402) Northing: **702598.86sft** Easting: **2348569.88sft**
Mapping Angle: **1°42'49"** Combination Scale Factor: **0.999993709**

IaRCS Zone 10 Northing: **8024977.319sft** Easting: **20709123.611sft**
Mapping Angle: **00° 30' 44"** Combination Scale Factor: **0.999991607**

Monument Type: Berntsen 3/4" Top Security Rod Monument with a 2-1/2" dia. domed survey cap and permanent magnet encased in a white PVC pipe with a NGS style alum. access cover.



This document was prepared by Dan Corbin, Inc. on September 30, 2015 for Cedar County, Iowa.