

**Cedar County, Iowa**  
Horizontal Datum: **NAD 83(2011)** - Vertical Datum: **NAVD 1988**  
Iowa State Plane South Zone (1402)  
Iowa Regional Coordinate System, Zone 10. Cedar Rapids (LCC)  
US Survey Feet  
**2015**

Point Name: **57**

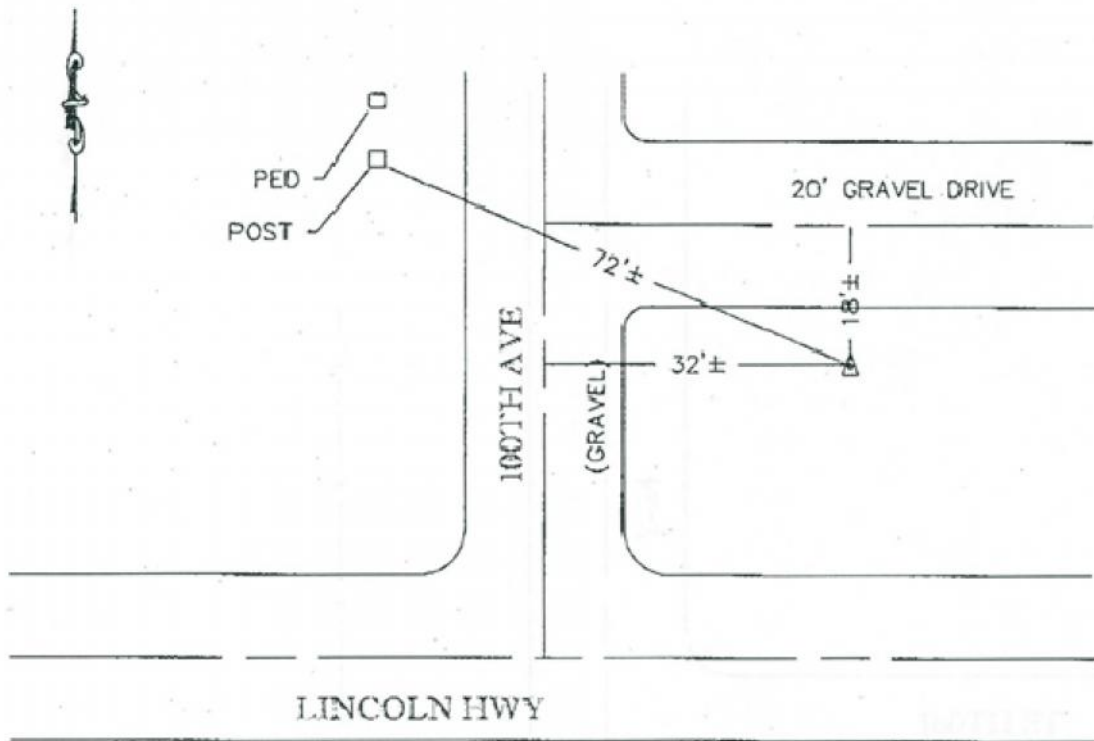
**Designation:** Clinton Co #15 (Set by others)

NAD 83(NA2011) Latitude: **N41°51'18.38627"** Longitude: **W90°53'53.39367"**  
NAVD 88 Ortho Height: **727.48sft** Ellip. Ht: **620.37sft** **Geoid12A**

**Iowa South Zone (1402)** Northing: **686501.41sft** Easting: **2349152.29sft**  
Mapping Angle: **1°42'50"** Combination Scale Factor: **0.999983932**

**IaRCS Zone 10** Northing: **8008871.162sft** Easting: **20709368.418sft**  
Mapping Angle: **00° 30' 45"** Combination Scale Factor: **0.999990359**

**Monument Type:** Aluminum survey cap in a thin walled PVC pipe with a white plastic cover.



*This document was prepared by Dan Corbin, Inc. on September 30, 2015 for Cedar County, Iowa.*