

Cedar County, Iowa
Horizontal Datum: **NAD 83(2011)** - Vertical Datum: **NAVD 1988**
Iowa State Plane South Zone (1402)
Iowa Regional Coordinate System, Zone 10. Cedar Rapids (LCC)
US Survey Feet
2015

Point Name: **58**

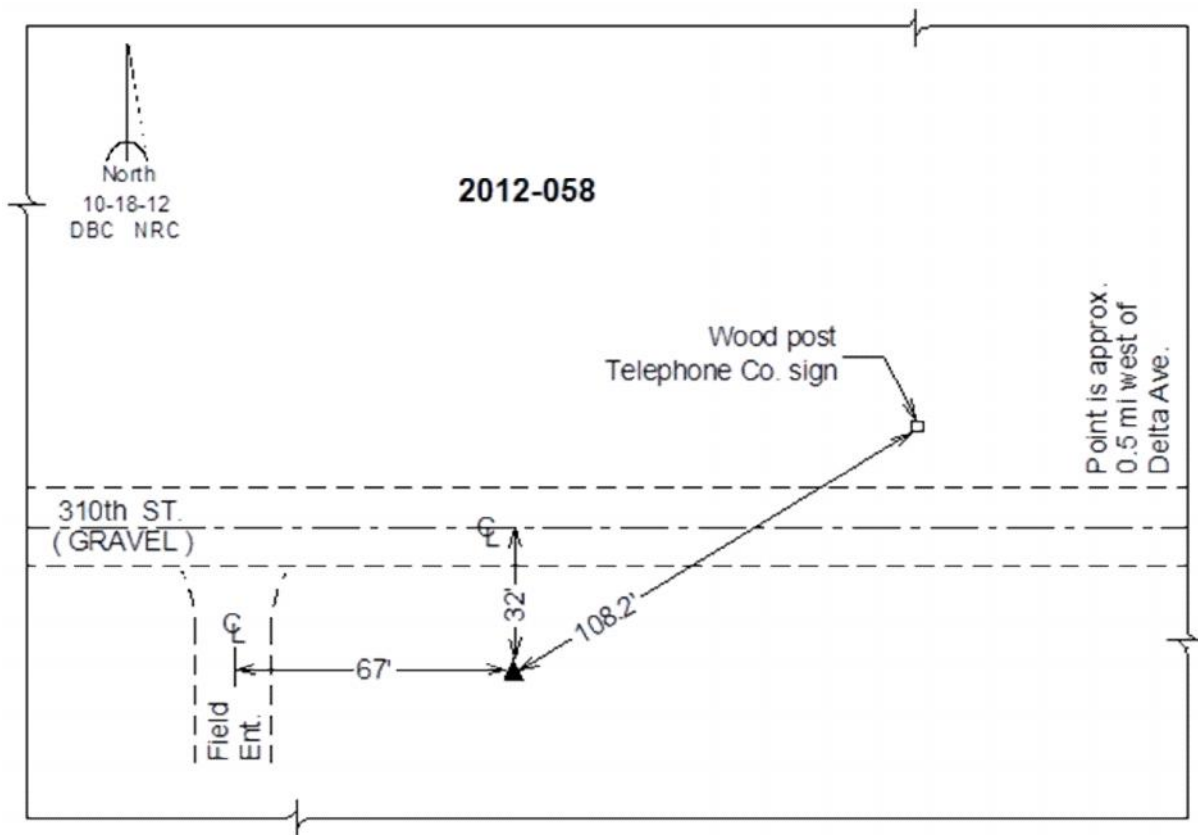
Designation: 2012-058 Cedar Co GPS Control Pt (Set by DCI in 2012)

NAD 83(NA2011) Latitude: **N41°38'30.90330"** Longitude: **W91°18'59.52422"**
NAVD 88 Ortho Height: **768.66sft** Ellip. Ht: **661.49sft** **Geoid12A**

Iowa South Zone (1402) Northing: **605705.76sft** Easting: **2237165.19sft**
Mapping Angle: **1°26'18"** Combination Scale Factor: **0.999946387**

IaRCS Zone 10 Northing: **7930442.340sft** Easting: **20595706.649sft**
Mapping Angle: **00° 14' 01"** Combination Scale Factor: **0.999993871**

Monument Type: Berntsen 3/4" Top Security Rod Monument with a 2-1/2" dia. domed survey cap and permanent magnet encased in a white PVC pipe with a NGS style alum. access cover.



This document was prepared by Dan Corbin, Inc. on September 30, 2015 for Cedar County, Iowa.