

Cedar County, Iowa
 Horizontal Datum: **NAD 83(2011)** - Vertical Datum: **NAVD 1988**
 Iowa State Plane South Zone (1402)
 Iowa Regional Coordinate System, Zone 10. Cedar Rapids (LCC)
 US Survey Feet
2015

Point Name: **5001**

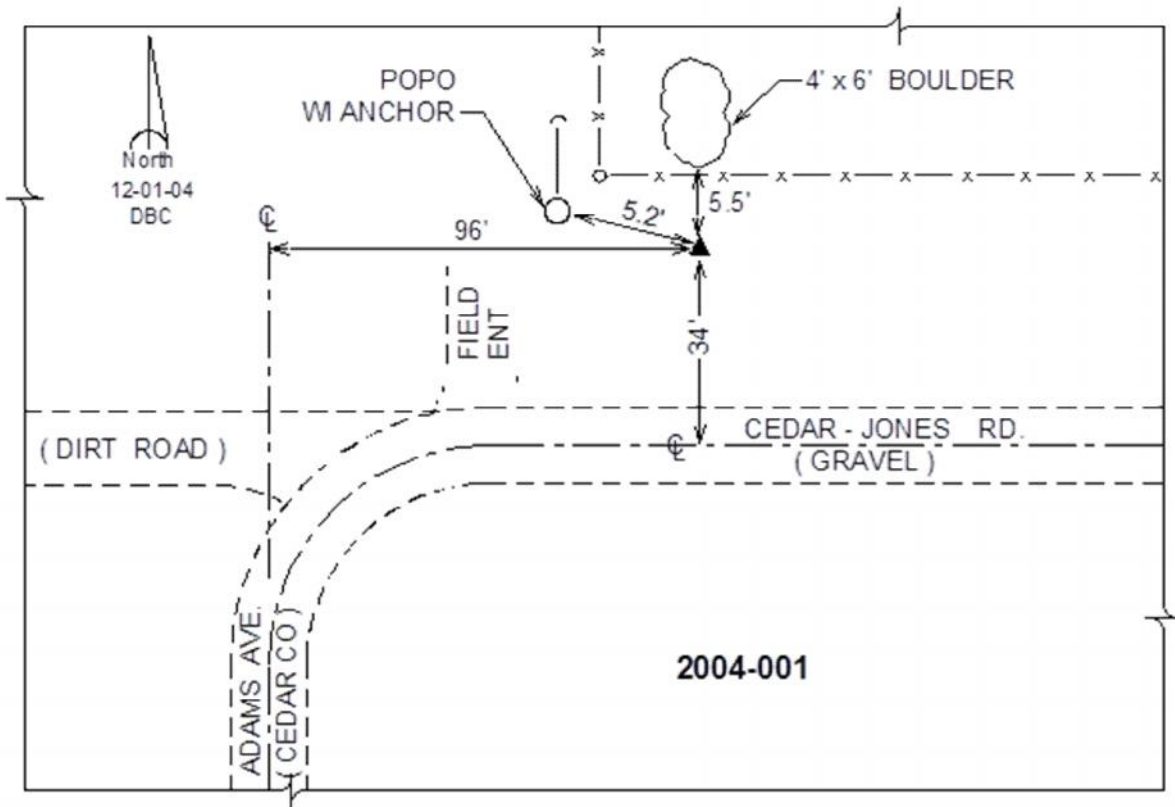
Designation: 2004-001 Jones Co GPS Control Pt (Set by DCI in 2004)

NAD 83(NA2011) Latitude: **N41°56'50.65982"** Longitude: **W91°21'22.64329"**
 NAVD 88 Ortho Height: **897.25sft** Ellip. Ht: **790.56sft** **Geoid12A**

Iowa South Zone (1402) Northing: **716721.81sft** Easting: **2223558.93sft**
 Mapping Angle: **1°24'43"** Combination Scale Factor: **0.999995537**

IaRCS Zone 10 Northing: **8041721.974sft** Easting: **20584437.605sft**
 Mapping Angle: **00° 12' 25"** Combination Scale Factor: **0.999984113**

Monument Type: Berntsen Top Security Rod Monument with a 2-1/2" dia. domed survey cap and permanent magnet encased in a white PVC pipe with a NGS style alum. access cover.



This document was prepared by Dan Corbin, Inc. on September 30, 2015 for Cedar County, Iowa.