

**Cedar County, Iowa**  
Horizontal Datum: **NAD 83(2011)** - Vertical Datum: **NAVD 1988**  
Iowa State Plane South Zone (1402)  
Iowa Regional Coordinate System, Zone 10. Cedar Rapids (LCC)  
US Survey Feet  
**2015**

Point Name: **5002**

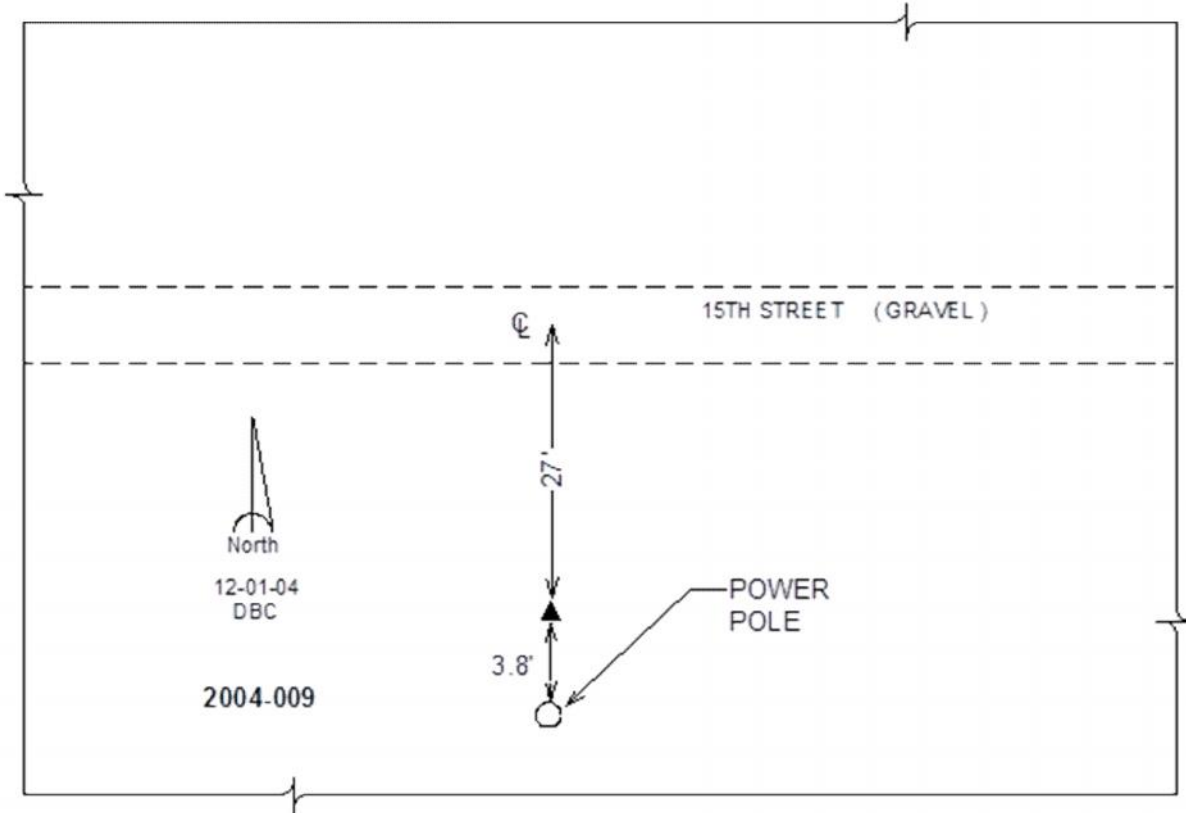
**Designation:** 2004-009 Jones Co GPS Control Pt (Set by DCI in 2004)

NAD 83(NA2011) Latitude: **N41°57'16.28439"** Longitude: **W91°18'32.58147"**  
NAVD 88 Ortho Height: **884.99sft** Ellip. Ht: **778.24sft** **Geoid12A**

**Iowa South Zone (1402)** Northing: **719635.11sft** Easting: **2236341.20sft**  
Mapping Angle: **1°26'35"** Combination Scale Factor: **0.999997755**

**IaRCS Zone 10** Northing: **8044365.821sft** Easting: **20597278.151sft**  
Mapping Angle: **00° 14' 19"** Combination Scale Factor: **0.999984957**

**Monument Type:** Berntsen Top Security Rod Monument with a 2-1/2" dia. domed survey cap and permanent magnet encased in a white PVC pipe with a NGS style alum. access cover.



*This document was prepared by Dan Corbin, Inc. on September 30, 2015 for Cedar County, Iowa.*