

Cedar County, Iowa
Horizontal Datum: **NAD 83(2011)** - Vertical Datum: **NAVD 1988**
Iowa State Plane South Zone (1402)
Iowa Regional Coordinate System, Zone 10. Cedar Rapids (LCC)
US Survey Feet
2015

Point Name: **5004**

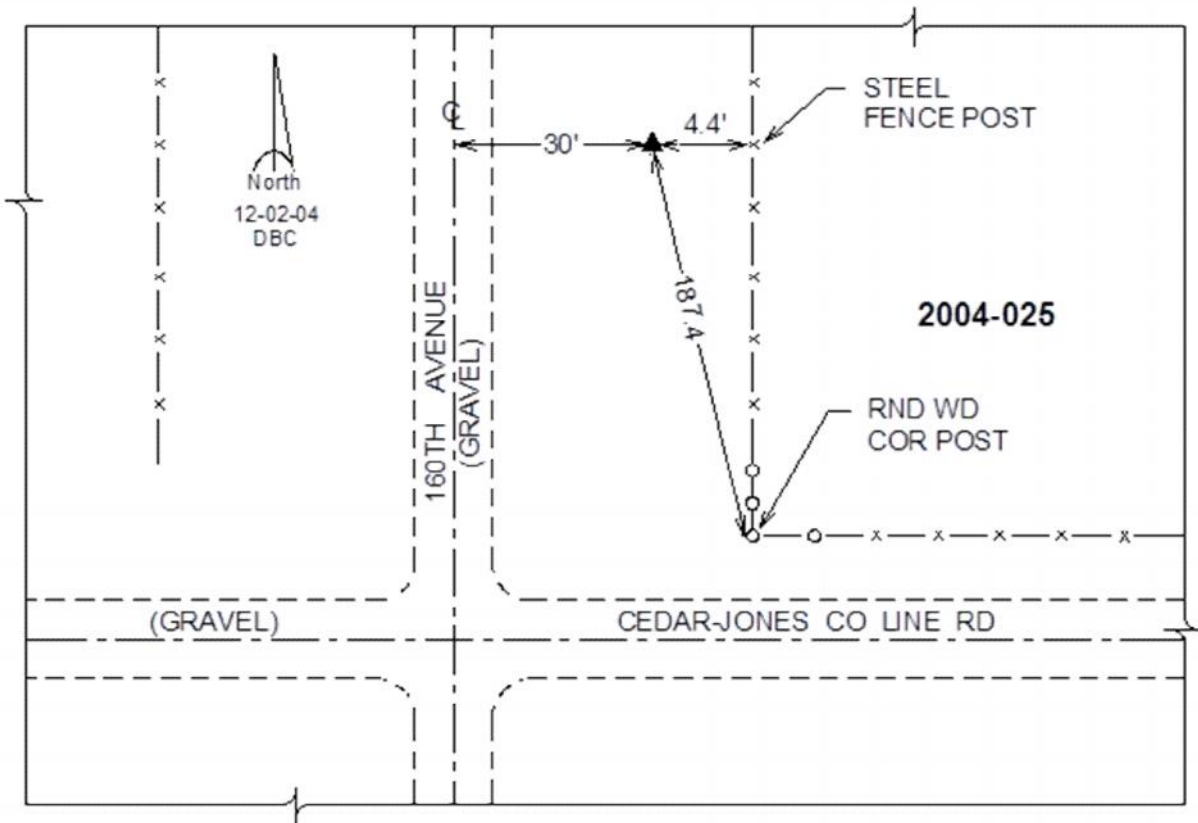
Designation: 2004-025 Jones Co GPS Control Pt (Set by DCI in 2004)

NAD 83(NA2011) Latitude: **N41°56'51.35373"** Longitude: **W91°11'26.73693"**
NAVD 88 Ortho Height: **801.88sft** Ellip. Ht: **694.96sft** **Geoid12A**

Iowa South Zone (1402) Northing: **717944.59sft** Easting: **2268575.00sft**
Mapping Angle: **1°31'16"** Combination Scale Factor: **1.000000142**

IaRCS Zone 10 Northing: **8041998.303sft** Easting: **20629468.923sft**
Mapping Angle: **00° 19' 03"** Combination Scale Factor: **0.999988698**

Monument Type: Berntsen Top Security Rod Monument with a 2-1/2" dia. domed survey cap and permanent magnet encased in a white PVC pipe with a NGS style alum. access cover.



This document was prepared by Dan Corbin, Inc. on September 30, 2015 for Cedar County, Iowa.