

**Cedar County, Iowa**  
Horizontal Datum: **NAD 83(2011)** - Vertical Datum: **NAVD 1988**  
Iowa State Plane South Zone (1402)  
Iowa Regional Coordinate System, Zone 10. Cedar Rapids (LCC)  
US Survey Feet  
**2015**

Point Name: **5005**

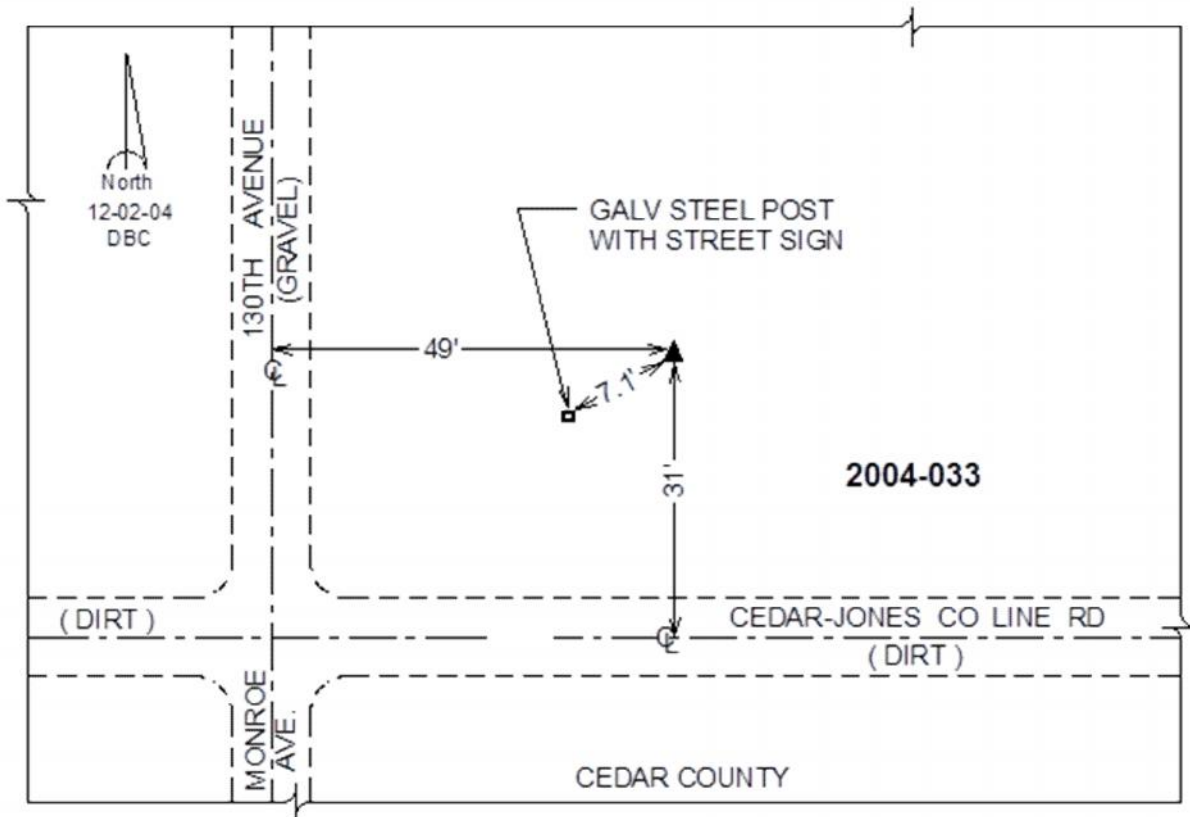
**Designation:** 2004-033 Jones Co GPS Control Pt (Set by DCI in 2004)

NAD 83(NA2011) Latitude: **N41°56'48.76281"** Longitude: **W91°07'55.26365"**  
NAVD 88 Ortho Height: **829.70sft** Ellip. Ht: **722.76sft** **Geoid12A**

**Iowa South Zone (1402)** Northing: **718112.03sft** Easting: **2284557.37sft**  
Mapping Angle: **1°33'35"** Combination Scale Factor: **0.999998652**

**IaRCS Zone 10** Northing: **8041830.033sft** Easting: **20645451.104sft**  
Mapping Angle: **00° 21' 24"** Combination Scale Factor: **0.999987342**

**Monument Type:** Berntsen Top Security Rod Monument with a 2-1/2" dia. domed survey cap and permanent magnet encased in a white PVC pipe with a NGS style alum. access cover.



*This document was prepared by Dan Corbin, Inc. on September 30, 2015 for Cedar County, Iowa.*