

**Cedar County, Iowa**  
 Horizontal Datum: **NAD 83(2011)** - Vertical Datum: **NAVD 1988**  
 Iowa State Plane South Zone (1402)  
 Iowa Regional Coordinate System, Zone 10. Cedar Rapids (LCC)  
 US Survey Feet  
**2015**

Point Name: **5006**

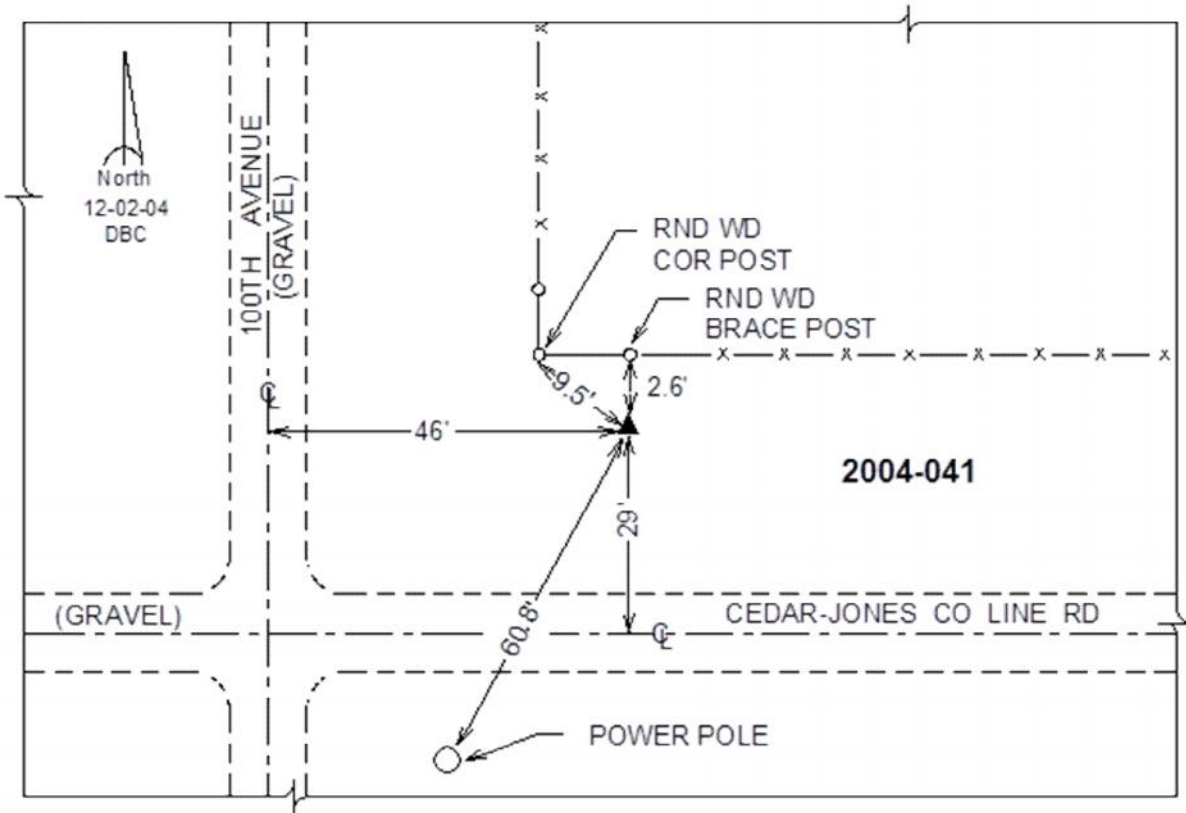
**Designation:** 2004-041 Jones Co GPS Control Pt (Set by DCI in 2004)

NAD 83(NA2011) Latitude: **N41°56'48.18795"** Longitude: **W91°04'24.39763"**  
 NAVD 88 Ortho Height: **863.69sft** Ellip. Ht: **756.76sft** **Geoid12A**

**Iowa South Zone (1402)** Northing: **718492.98sft** Easting: **2300488.24sft**  
 Mapping Angle: **1°35'54"** Combination Scale Factor: **0.999996993**

**IaRCS Zone 10** Northing: **8041876.450sft** Easting: **20661386.276sft**  
 Mapping Angle: **00° 23' 44"** Combination Scale Factor: **0.999985708**

**Monument Type:** Berntsen Top Security Rod Monument with a 2-1/2" dia. domed survey cap and permanent magnet encased in a white PVC pipe with a NGS style alum. access cover.



*This document was prepared by Dan Corbin, Inc. on September 30, 2015 for Cedar County, Iowa.*