

Cedar County, Iowa
Horizontal Datum: **NAD 83(2011)** - Vertical Datum: **NAVD 1988**
Iowa State Plane South Zone (1402)
Iowa Regional Coordinate System, Zone 10. Cedar Rapids (LCC)
US Survey Feet
2015

Point Name: **5007**

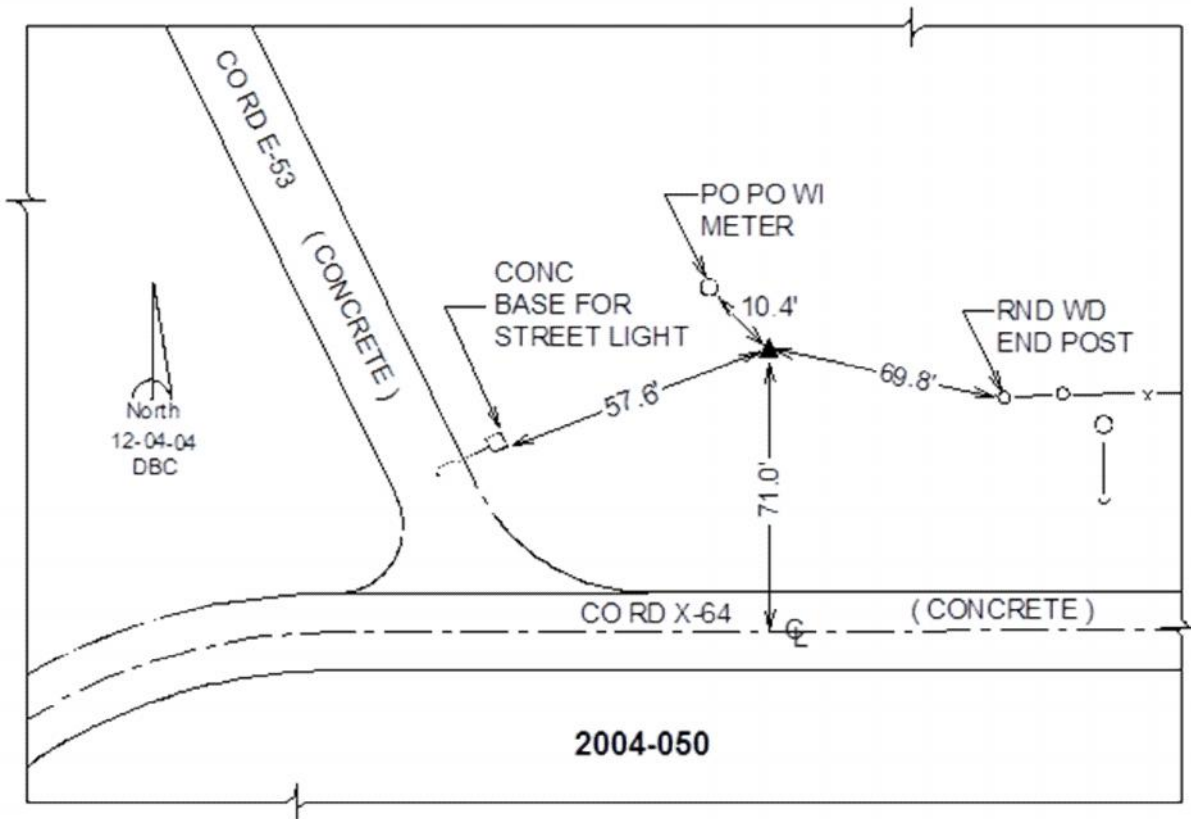
Designation: 2004-050 Jones Co GPS Control Pt (Set by DCI in 2004)

NAD 83(NA2011) Latitude: **N41°57'16.71139"** Longitude: **W91°01'05.26837"**
NAVD 88 Ortho Height: **822.12sft** Ellip. Ht: **715.20sft** **Geoid12A**

Iowa South Zone (1402) Northing: **721803.72sft** Easting: **2315448.25sft**
Mapping Angle: **1°38'05"** Combination Scale Factor: **1.000000790**

IaRCS Zone 10 Northing: **8044872.475sft** Easting: **20676412.292sft**
Mapping Angle: **00° 25' 57"** Combination Scale Factor: **0.999987981**

Monument Type: Berntsen Top Security Rod Monument with a 2-1/2" dia. domed survey cap and permanent magnet encased in a white PVC pipe with a NGS style alum. access cover.



This document was prepared by Dan Corbin, Inc. on September 30, 2015 for Cedar County, Iowa.