

Cedar County, Iowa
Horizontal Datum: **NAD 83(2011)** - Vertical Datum: **NAVD 1988**
Iowa State Plane South Zone (1402)
Iowa Regional Coordinate System, Zone 10. Cedar Rapids (LCC)
US Survey Feet
2015

Point Name: **5008**

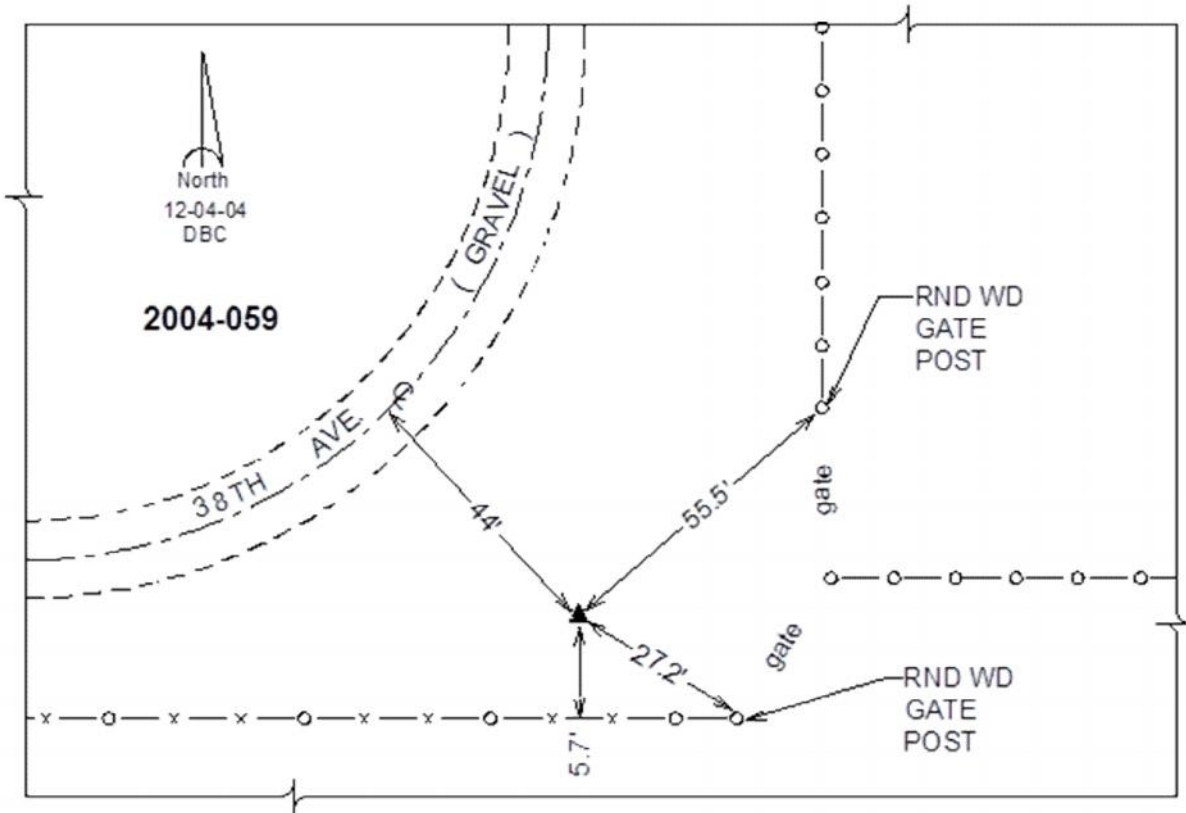
Designation: 2004-059 Jones Co GPS Control Pt (Set by DCI in 2004)

NAD 83(NA2011) Latitude: **N41°56'47.30649"** Longitude: **W90°57'07.51106"**
NAVD 88 Ortho Height: **833.94sft** Ellip. Ht: **726.99sft** **Geoid12A**

Iowa South Zone (1402) Northing: **719347.74sft** Easting: **2333493.25sft**
Mapping Angle: **1°40'42"** Combination Scale Factor: **0.999998358**

IaRCS Zone 10 Northing: **8042038.534sft** Easting: **20694401.596sft**
Mapping Angle: **00° 28' 36"** Combination Scale Factor: **0.999987125**

Monument Type: Berntsen Top Security Rod Monument with a 2-1/2" dia. domed survey cap and permanent magnet encased in a white PVC pipe with a NGS style alum. access cover.



This document was prepared by Dan Corbin, Inc. on September 30, 2015 for Cedar County, Iowa.