

Cedar County, Iowa
 Horizontal Datum: **NAD 83(2011)** - Vertical Datum: **NAVD 1988**
 Iowa State Plane South Zone (1402)
 Iowa Regional Coordinate System, Zone 10. Cedar Rapids (LCC)
 US Survey Feet
2015

Point Name: **5009**

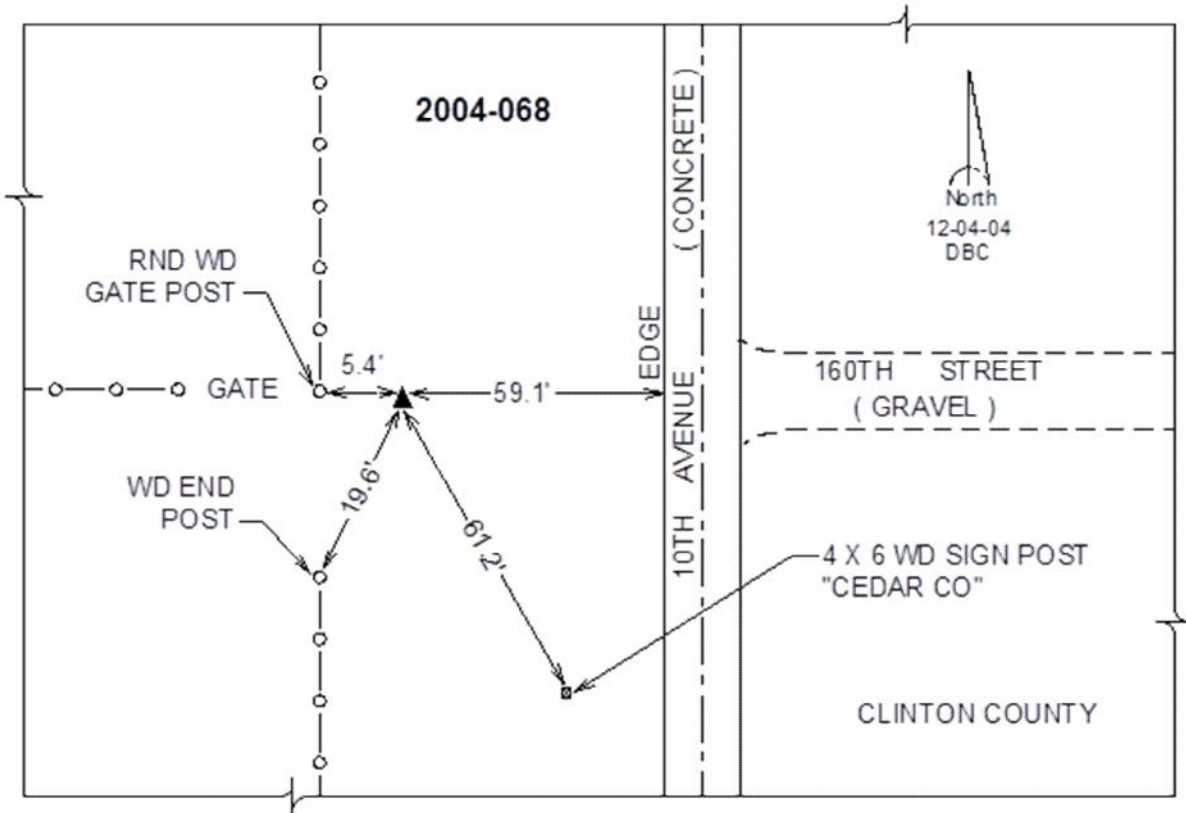
Designation: 2004-068 Jones Co GPS Control Pt (Set by DCI in 2004)

NAD 83(NA2011) Latitude: **N41°56'46.43195"** Longitude: **W90°53'55.52188"**
 NAVD 88 Ortho Height: **720.45sft** Ellip. Ht: **613.44sft** **Geoid12A**

Iowa South Zone (1402) Northing: **719688.63sft** Easting: **2347998.39sft**
 Mapping Angle: **1°42'48"** Combination Scale Factor: **1.000003721**

IaRCS Zone 10 Northing: **8042075.200sft** Easting: **20708910.532sft**
 Mapping Angle: **00° 30' 44"** Combination Scale Factor: **0.999992555**

Monument Type: Berntsen Top Security Rod Monument with a 2-1/2" dia. domed survey cap and permanent magnet encased in a white PVC pipe with a NGS style alum. access cover.



This document was prepared by Dan Corbin, Inc. on September 30, 2015 for Cedar County, Iowa.