

**Cedar County, Iowa**  
Horizontal Datum: **NAD 83(2011)** - Vertical Datum: **NAVD 1988**  
Iowa State Plane South Zone (1402)  
Iowa Regional Coordinate System, Zone 10. Cedar Rapids (LCC)  
US Survey Feet  
**2015**

Point Name: **5010**

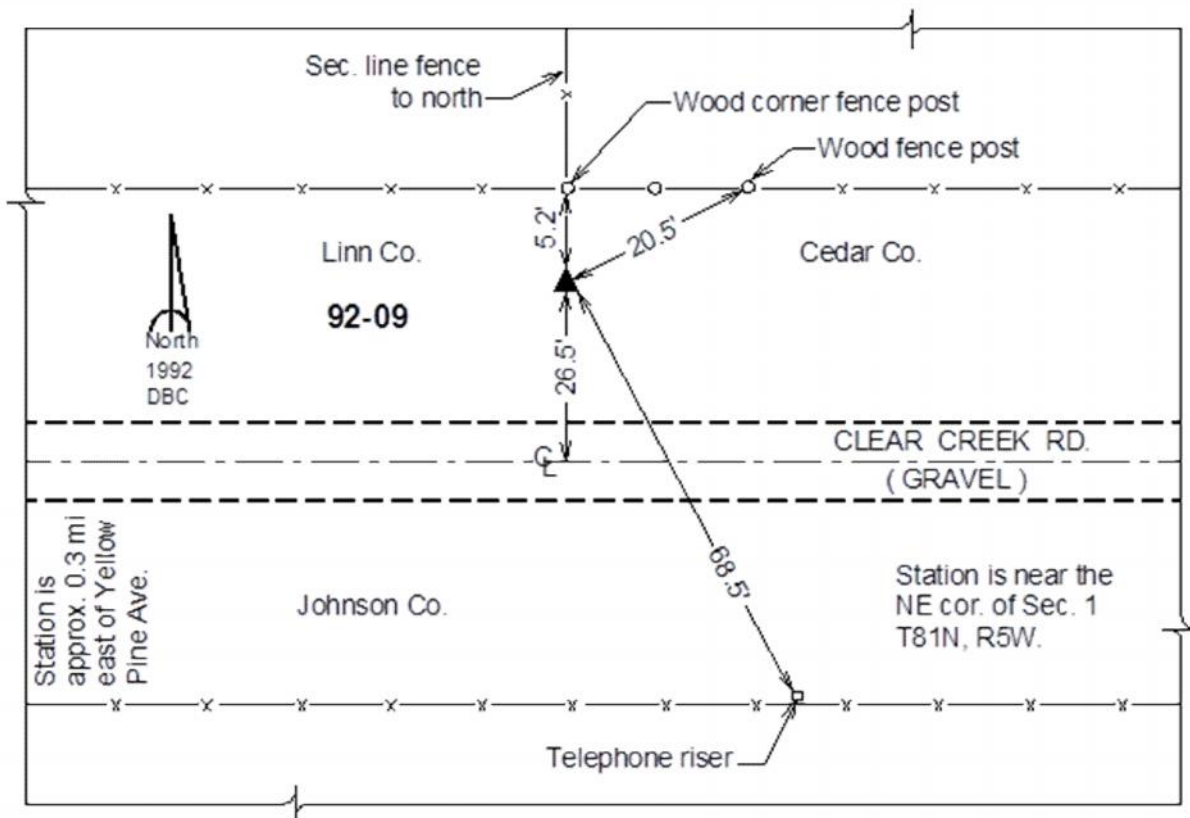
**Designation:** 92-09 Johnson Co GPS Control Pt (Set by ASI in 1992)

NAD 83(NA2011) Latitude: **N41°51'36.52021"** Longitude: **W91°21'58.39030"**  
NAVD 88 Ortho Height: **736.35sft** Ellip. Ht: **629.46sft** **Geoid12A**

**Iowa South Zone (1402)** Northing: **684865.71sft** Easting: **2221638.33sft**  
Mapping Angle: **1°24'20"** Combination Scale Factor: **0.999984507**

**IaRCS Zone 10** Northing: **8009913.399sft** Easting: **20581847.463sft**  
Mapping Angle: **00° 12' 01"** Combination Scale Factor: **0.999989961**

**Monument Type:** 5/8" dia. driven aluminum rod with a 2-1/2" dia. aluminum cap and permanent magnet encased in a 6" dia. PVC pipe with an aluminum access cover.



*This document was prepared by Dan Corbin, Inc. on September 30, 2015 for Cedar County, Iowa.*