

Cedar County, Iowa
Horizontal Datum: **NAD 83(2011)** - Vertical Datum: **NAVD 1988**
Iowa State Plane South Zone (1402)
Iowa Regional Coordinate System, Zone 10. Cedar Rapids (LCC)
US Survey Feet
2015

Point Name: **5017**

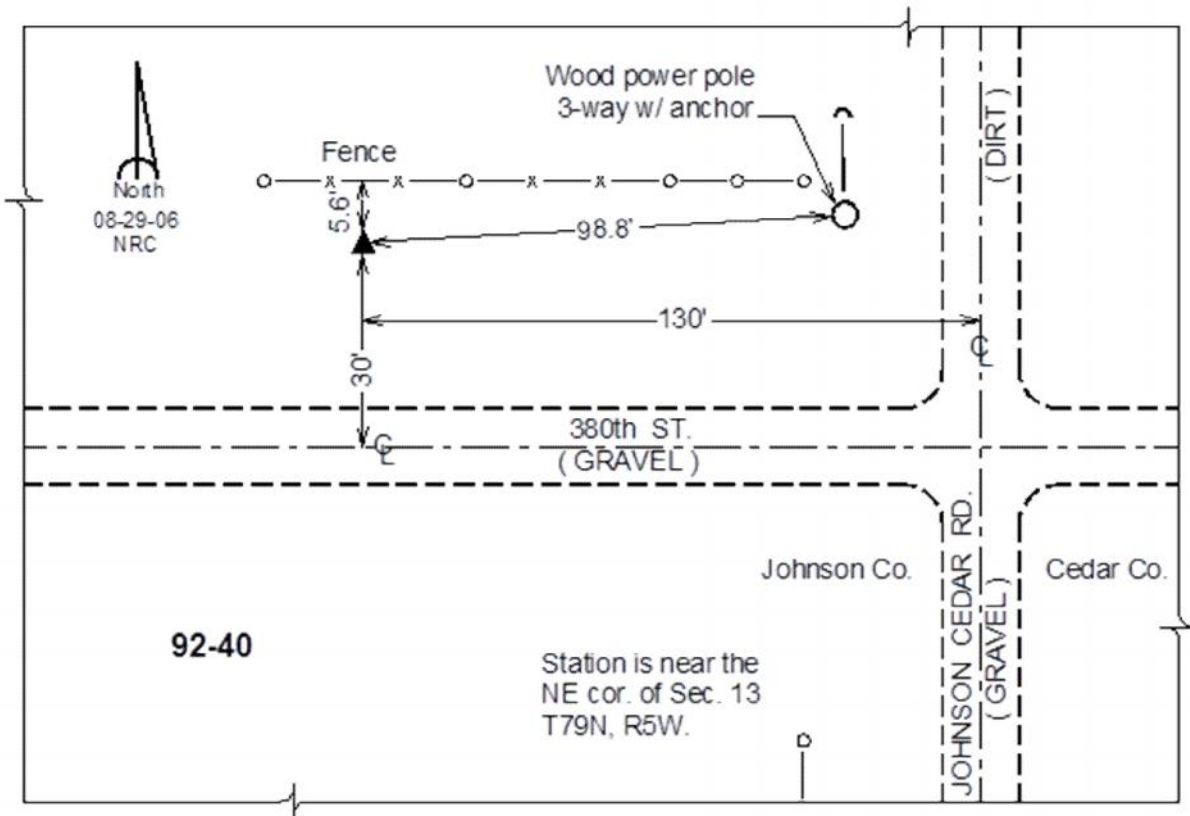
Designation: 92-40 Johnson Co GPS Control Pt (Set by ASI in 1992)

NAD 83(NA2011) Latitude: **N41°39'23.57317"** Longitude: **W91°22'00.70466"**
NAVD 88 Ortho Height: **778.41sft** Ellip. Ht: **671.28sft** **Geoid12A**

Iowa South Zone (1402) Northing: **610693.98sft** Easting: **2223282.47sft**
Mapping Angle: **1°24'18"** Combination Scale Factor: **0.999947918**

IaRCS Zone 10 Northing: **7935721.625sft** Easting: **20581931.256sft**
Mapping Angle: **00° 12' 00"** Combination Scale Factor: **0.999992586**

Monument Type: 5/8" dia. driven aluminum rod with a 2-1/2" dia. aluminum cap and permanent magnet encased in a 6" dia. PVC pipe with an aluminum access cover.



This document was prepared by Dan Corbin, Inc. on September 30, 2015 for Cedar County, Iowa.