

Cedar County, Iowa
Horizontal Datum: **NAD 83(2011)** - Vertical Datum: **NAVD 1988**
Iowa State Plane South Zone (1402)
Iowa Regional Coordinate System, Zone 10. Cedar Rapids (LCC)
US Survey Feet
2015

Point Name: **5018**

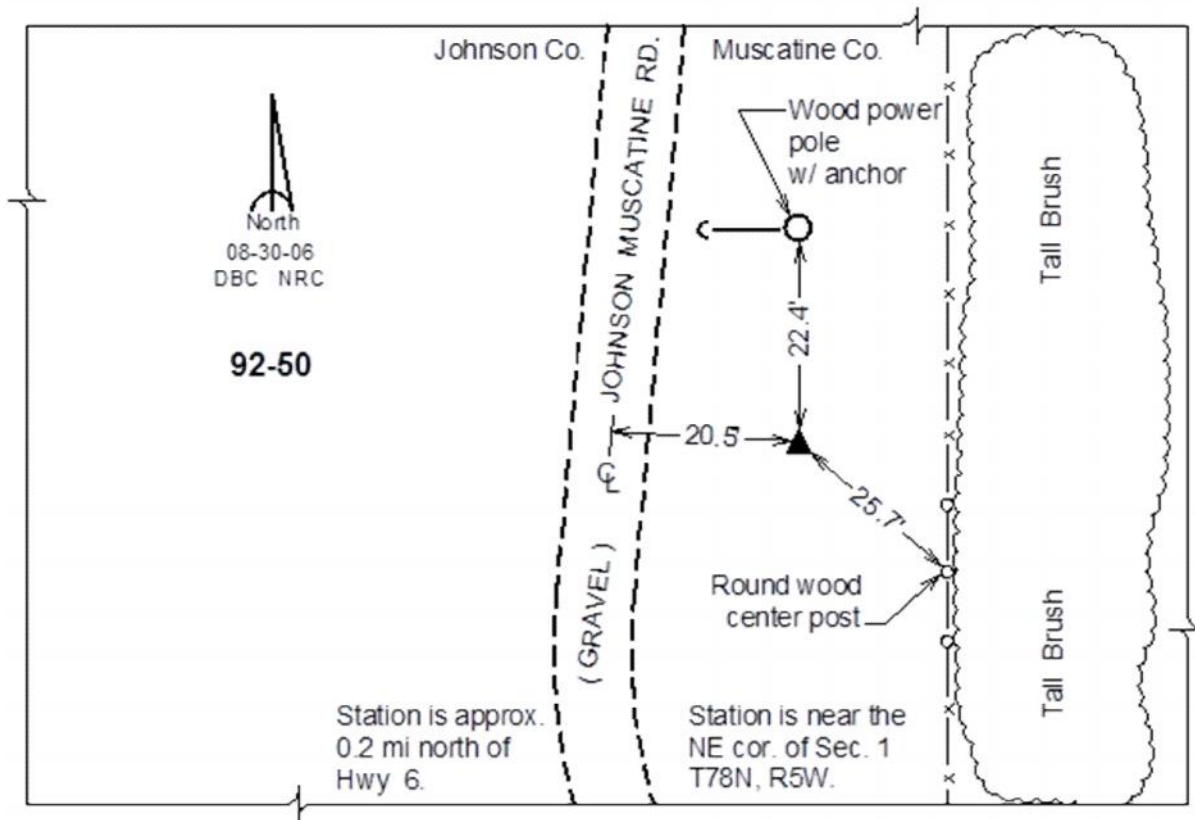
Designation: 92-50 Johnson Co GPS Control Pt (Set by ASI in 1992)

NAD 83(NA2011) Latitude: **N41°35'53.30384"** Longitude: **W91°21'59.02880"**
NAVD 88 Ortho Height: **736.96sft** Ellip. Ht: **629.73sft** **Geoid12A**

Iowa South Zone (1402) Northing: **589420.71sft** Easting: **2223931.64sft**
Mapping Angle: **1°24'19"** Combination Scale Factor: **0.999942316**

IaRCS Zone 10 Northing: **7914438.337sft** Easting: **20582132.868sft**
Mapping Angle: **00° 12' 01"** Combination Scale Factor: **0.999998221**

Monument Type: 5/8" dia. driven aluminum rod with a 2-1/2" dia. aluminum cap and permanent magnet encased in a 5" dia. PVC pipe with an aluminum access cover.



This document was prepared by Dan Corbin, Inc. on September 30, 2015 for Cedar County, Iowa.