

**Cedar County, Iowa**  
Horizontal Datum: **NAD 83(2011)** - Vertical Datum: **NAVD 1988**  
Iowa State Plane South Zone (1402)  
Iowa Regional Coordinate System, Zone 10. Cedar Rapids (LCC)  
US Survey Feet  
**2015**

Point Name: **5019**

**Designation:** 2000-100 Muscatine Co GPS Control Pt (Set by ASI in 2000)

NAD 83(NA2011) Latitude: **N41°35'53.45609"** Longitude: **W91°14'58.63017"**  
NAVD 88 Ortho Height: **675.25sft** Ellip. Ht: **567.98sft** **Geoid12A**

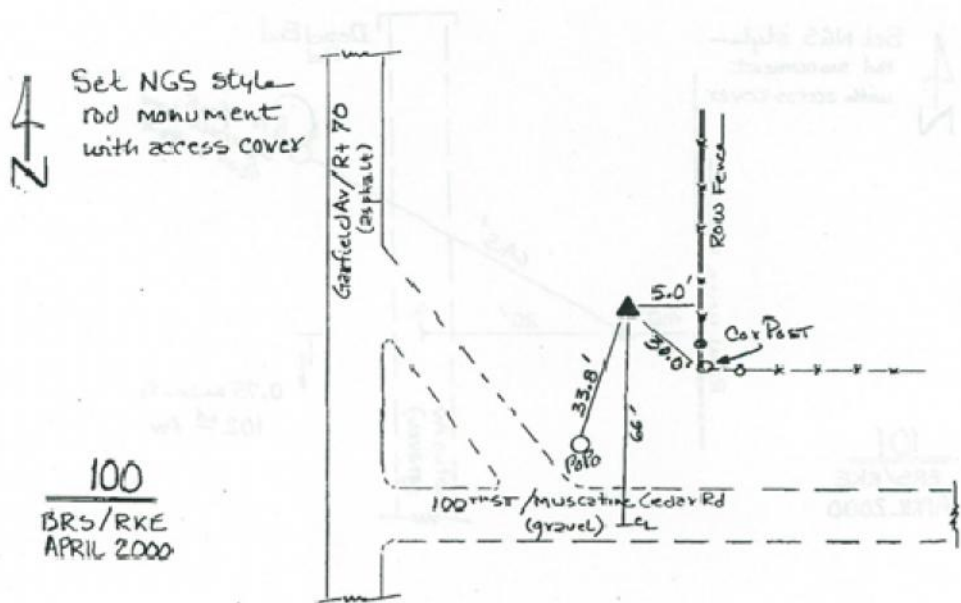
**Iowa South Zone (1402)** Northing: **590240.94sft** Easting: **2255861.52sft**  
Mapping Angle: **1°28'56"** Combination Scale Factor: **0.999945268**

**IaRCS Zone 10** Northing: **7914587.108sft** Easting: **20614074.728sft**  
Mapping Angle: **00° 16' 41"** Combination Scale Factor: **1.000001176**

**Monument Type:** 5/8" dia. driven aluminum rod with a 2-1/2" dia. aluminum cap and permanent magnet encased in a 5" dia. PVC pipe with an aluminum access cover.

**To Reach:** 65ft N of Muscatine-Cedar Rd., 225ft E of Garfield Av. (X 40) near the NW cor Sec 6 T78N R3W.

Date Printed August 9, 2000



*This document was prepared by Dan Corbin, Inc. on September 30, 2015 for Cedar County, Iowa.*